

Ac-Endothelin-1 (16-21), human

Chemical Properties

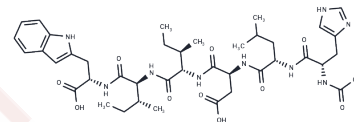
CAS No. :

Formula: C41H59N9O10

Molecular Weight: 837.96

Storage: Powder: -20°C for 3 years | In solvent: -80°C for 1 year

Actual storage temperature shall be subject to the COA.



Biological Description

| | |
|---------------|--|
| Description | ENDOTHELIN-1 (ET-1), the principal peptide of the endothelin family, has been shown to have a variety of biological activities in both vascular and nonvascular tissues. The C-terminal fragment, which is a highly conserved sequence in the peptides of the ET family, has been shown to discriminate between the two ET receptor subtypes termed ETA and ETB since it activates only the latter ones. |
| Targets(IC50) | Others |
| In vitro | At the cellular level, the effects of ET-1 appear to be mediated by two specific receptor subtypes termed ETA and ETB, both of which are functionally coupled to phospholipase C (PLC). |

Solubility Information

| | |
|------------|--|
| Solubility | DMSO: > 83.8 mg/mL, Heating is recommended. (< 1 mg/ml refers to the product slightly soluble or insoluble) |
|------------|--|

Preparing Stock Solutions

| | 1mg | 5mg | 10mg |
|-------|-----------|-----------|------------|
| 1 mM | 1.1934 mL | 5.9669 mL | 11.9337 mL |
| 5 mM | 0.2387 mL | 1.1934 mL | 2.3867 mL |
| 10 mM | 0.1193 mL | 0.5967 mL | 1.1934 mL |
| 50 mM | 0.0239 mL | 0.1193 mL | 0.2387 mL |

Please select the appropriate solvent to prepare the stock solution, according to the solubility of the product in different solvents. Please use it as soon as possible.

Note: The dilution table applies only to solid products. For liquid products, please calculate the stock solution based on the stated concentration and/or density.

Inhibitor · Natural Compounds · Compound Libraries · Recombinant Proteins

This product is for Research Use Only · Not for Human or Veterinary or Therapeutic Use

Tel:781-999-4286 E_mail:info@targetmol.com Address:34 Washington Street,Wellesley Hills,MA 02481