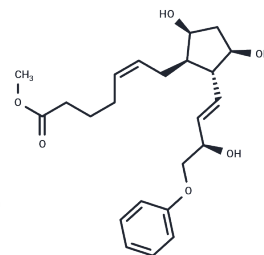


16-phenoxy tetranor Prostaglandin F2 $\alpha$  methyl ester

## Chemical Properties

CAS No. :	51638-90-5
Formula:	C <sub>23</sub> H <sub>32</sub> O <sub>6</sub>
Molecular Weight:	404.503
Storage:	Powder: -20°C for 3 years   In solvent: -80°C for 1 year Actual storage temperature shall be subject to the COA.



## Biological Description

Description	Prostaglandin F <sub>2</sub> $\alpha$ (PGF <sub>2</sub> $\alpha$ ) drives luteolysis and smooth muscle contraction by activating the FP receptor. Stable, lipophilic analogs of PGF <sub>2</sub> $\alpha$ are used to modulate luteolysis and treat glaucoma. 16-phenoxy tetranor Prostaglandin F <sub>2</sub> $\alpha$ (16-phenoxy tetranor PGF <sub>2</sub> $\alpha$ ) is a metabolically stable form of PGF <sub>2</sub> $\alpha$ containing a 16-phenoxy group at the $\omega$ -terminus. It binds to the FP receptor on ovine luteal cells with much greater affinity (440%) than PGF <sub>2</sub> $\alpha$ . 16-phenoxy tetranor PGF <sub>2</sub> $\alpha$ methyl ester is a lipophilic analog of 16-phenoxy tetranor PGF <sub>2</sub> $\alpha$ . Methyl esters of PGs serve as prodrugs, as they are efficiently hydrolyzed in certain tissues to generate the bioactive free acid.
Targets(IC50)	Others,Prostaglandin Receptor

## Solubility Information

Solubility	DMSO: 100 mg/mL (247.22 mM),Sonication is recommended. Ethanol: 100 mg/mL (247.22 mM),Sonication is recommended. PBS (pH 7.2): 0.5 mg/mL (1.24 mM),Sonication is recommended. DMF: 100 mg/mL (247.22 mM),Sonication is recommended. (< 1 mg/ml refers to the product slightly soluble or insoluble)
------------	---

### Preparing Stock Solutions

---

	<b>1mg</b>	<b>5mg</b>	<b>10mg</b>
1 mM	2.4722 mL	12.3609 mL	24.7219 mL
5 mM	0.4944 mL	2.4722 mL	4.9444 mL
10 mM	0.2472 mL	1.2361 mL	2.4722 mL
50 mM	0.0494 mL	0.2472 mL	0.4944 mL

---

Please select the appropriate solvent to prepare the stock solution, according to the solubility of the product in different solvents. Please use it as soon as possible.

Note: The dilution table applies only to solid products. For liquid products, please calculate the stock solution based on the stated concentration and/or density.

**Inhibitor · Natural Compounds · Compound Libraries · Recombinant Proteins**

This product is for Research Use Only · Not for Human or Veterinary or Therapeutic Use

Tel:781-999-4286 E\_mail:info@targetmol.com Address:34 Washington Street,Wellesley Hills,MA 02481