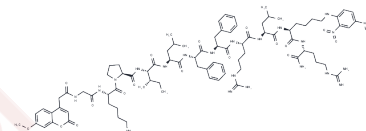


## Cathepsin D and E FRET Substrate

## Chemical Properties

CAS No. :	839730-93-7
Formula:	C <sub>85</sub> H <sub>122</sub> N <sub>22</sub> O <sub>19</sub>
Molecular Weight:	1756.046
Storage:	Keep away from moisture Powder: -20°C for 3 years   In solvent: -80°C for 1 year <small>Actual storage temperature shall be subject to the COA.</small>



## Biological Description

Description	Mca-GKPILFFRL-Dpa-r-amide, FRET substrate for cathepsin D and E. Also cleaved by napsin A.
Targets(IC50)	Cysteine Protease

## Solubility Information

Solubility	DMSO: Soluble ( $< 1$ mg/ml refers to the product slightly soluble or insoluble)
------------	---

## Preparing Stock Solutions

	1mg	5mg	10mg
1 mM	0.5695 mL	2.8473 mL	5.6946 mL
5 mM	0.1139 mL	0.5695 mL	1.1389 mL
10 mM	0.0569 mL	0.2847 mL	0.5695 mL
50 mM	0.0114 mL	0.0569 mL	0.1139 mL

Please select the appropriate solvent to prepare the stock solution, according to the solubility of the product in different solvents. Please use it as soon as possible.

Note: The dilution table applies only to solid products. For liquid products, please calculate the stock solution based on the stated concentration and/or density.

Inhibitor · Natural Compounds · Compound Libraries · Recombinant Proteins

This product is for Research Use Only · Not for Human or Veterinary or Therapeutic Use

Tel: 781-999-4286 E\_mail: info@targetmol.com Address: 34 Washington Street, Wellesley Hills, MA 02481