

Leptomycin B

Chemical Properties

CAS No. : 87081-35-4

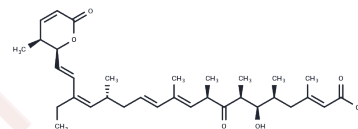
Formula: C₃₃H₄₈O₆

Molecular Weight: 540.73

Store at low temperature

Storage: Pure form: -20°C for 3 years | In solvent: -80°C for 1 year

Actual storage temperature shall be subject to the COA.



Biological Description

Description	Leptomycin B (LMB) is a potent inhibitor of the nuclear export of proteins and is a potent antifungal antibiotic blocking the eukaryotic cell cycle. Leptomycin B inactivates CRM1/exportin 1 by covalent modification at a cysteine residue.
Targets(IC50)	Antibiotic,Antifungal,CRM1

Solubility Information

Solubility	DMSO: 101 mg/mL (186.78 mM),Sonication is recommended. (< 1 mg/ml refers to the product slightly soluble or insoluble)
In vivo Formulation	10% DMSO+40% PEG300+5% Tween 80+45% Saline: 4 mg/mL (7.4 mM),Sonication is recommended. <i>Please add the solvents sequentially, clarifying the solution as much as possible before adding the next one. Dissolve by heating and/or sonication if necessary. Working solution is recommended to be prepared and used immediately. The formulation provided above is for reference purposes only. In vivo formulations may vary and should be modified based on specific experimental conditions.</i>

Preparing Stock Solutions

	1mg	5mg	10mg
1 mM	1.8494 mL	9.2468 mL	18.4935 mL
5 mM	0.3699 mL	1.8494 mL	3.6987 mL
10 mM	0.1849 mL	0.9247 mL	1.8494 mL
50 mM	0.037 mL	0.1849 mL	0.3699 mL

Please select the appropriate solvent to prepare the stock solution, according to the solubility of the product in different solvents. Please use it as soon as possible.

Note: The dilution table applies only to solid products. For liquid products, please calculate the stock solution based on the stated concentration and/or density.

Reference

Kudo N, et al. Leptomycin B inactivates CRM1/exportin 1 by covalent modification at a cysteine residue in the central conserved region. Proc Natl Acad Sci U S A. 1999 Aug 3;96(16):9112-7.

Inhibitor · Natural Compounds · Compound Libraries · Recombinant Proteins

This product is for Research Use Only · Not for Human or Veterinary or Therapeutic Use

Tel:781-999-4286 E_mail:info@targetmol.com Address:34 Washington Street,Wellesley Hills,MA 02481