

Dexpramipexole

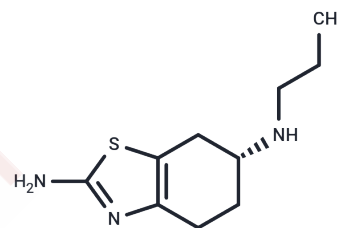
Chemical Properties

CAS No. : 104632-28-2

Formula: C₁₀H₁₇N₃S

Molecular Weight: 211.33

Storage: Keep away from direct sunlight, Store at low temperature, Keep away from moisture
 Powder: -20°C for 3 years | In solvent: -80°C for 1 year
 Actual storage temperature shall be subject to the COA.



Biological Description

Description	Dexpramipexole ((R)-Prasopexole), a BTZ structural analog of riluzole, is a mitochondrial protectant that maintains mitochondrial function and energy production, attenuates myocardial ischemia/reperfusion injury by up-regulating mitochondrial autophagy, and can be used in the treatment of amyotrophic lateral sclerosis disease.
Targets(IC50)	Dopamine Receptor
In vitro	Dexpramipexole is neuroprotective and has been used in research studies for the treatment of amyotrophic lateral sclerosis (ALS). Dexpramipexole reduces mitochondrial reactive oxygen species (ROS) production, inhibits activation of apoptotic pathways, and improves cell survival in response to a variety of neurotoxins and beta-amyloid neurotoxicity. Dexpramipexole is much less active than dopamine agonists of the S-(-) isomer. [1]

Solubility Information

Solubility	DMSO: 8 mg/mL (37.86 mM), Sonication is recommended. (< 1 mg/ml refers to the product slightly soluble or insoluble)
------------	---

Preparing Stock Solutions

	1mg	5mg	10mg
1 mM	4.7319 mL	23.6597 mL	47.3194 mL
5 mM	0.9464 mL	4.7319 mL	9.4639 mL
10 mM	0.4732 mL	2.366 mL	4.7319 mL
50 mM	0.0946 mL	0.4732 mL	0.9464 mL

Please select the appropriate solvent to prepare the stock solution, according to the solubility of the product in different solvents. Please use it as soon as possible.

Note: The dilution table applies only to solid products. For liquid products, please calculate the stock solution based on the stated concentration and/or density.

Reference

- Alavian KN, et al. Effects of dexpramipexole on brain mitochondrial conductances and cellular bioenergetic efficiency. *Brain Res.* 2012 Mar 29;1446:1-11.
- Cheah BC, et al. Dexpramipexole, the R(+) enantiomer of pramipexole, for the potential treatment of amyotrophic lateral sclerosis. *IDrugs.* 2010 Dec;13(12):911-20.
- Bozik ME, et al. Safety, tolerability, and pharmacokinetics of KNS-760704 (dexpramipexole) in healthy adult subjects. *J Clin Pharmacol.* 2011 Aug;51(8):1177-85.
- Cudkowicz M, et al. The effects of dexpramipexole (KNS-760704) in individuals with amyotrophic lateral sclerosis. *Nat Med.* 2011 Nov 20;17(12):1652-6.

Inhibitor · Natural Compounds · Compound Libraries · Recombinant Proteins

This product is for Research Use Only · Not for Human or Veterinary or Therapeutic Use

Tel:781-999-4286 E_mail:info@targetmol.com Address:34 Washington Street,Wellesley Hills,MA 02481