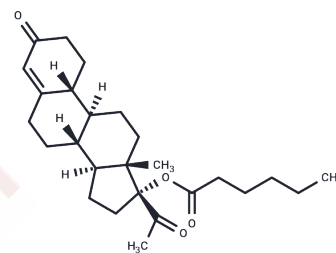


## Gestonorone Capronate

## Chemical Properties

CAS No. :	1253-28-7
Formula:	C <sub>26</sub> H <sub>38</sub> O <sub>4</sub>
Molecular Weight:	414.58
Storage:	Powder: -20°C for 3 years   In solvent: -80°C for 1 year Actual storage temperature shall be subject to the COA.



## Biological Description

Description	Gestonorone Capronate is a progesterone used in benign prostatic hyperplasia and endometrial cancer studies.
Targets(IC50)	Progesterone Receptor, Prostaglandin Receptor
In vitro	The administration of gestonorone capronate impedes testosterone reduction, while the oxidation pathway remains uninfluenced. This inhibition of 5 $\alpha$ -reduction product formation occurs at the lowest dose and progressively increases with higher concentrations of gestonorone capronate.

## Solubility Information

Solubility	DMSO: 10 mg/mL (24.12 mM), Sonication is recommended. ( $< 1$ mg/ml refers to the product slightly soluble or insoluble)
------------	---

## Preparing Stock Solutions

	1mg	5mg	10mg
1 mM	2.4121 mL	12.0604 mL	24.1208 mL
5 mM	0.4824 mL	2.4121 mL	4.8242 mL
10 mM	0.2412 mL	1.206 mL	2.4121 mL
50 mM	0.0482 mL	0.2412 mL	0.4824 mL

Please select the appropriate solvent to prepare the stock solution, according to the solubility of the product in different solvents. Please use it as soon as possible.

Note: The dilution table applies only to solid products. For liquid products, please calculate the stock solution based on the stated concentration and/or density.

Reference

Orestano F, et al. Mode of action of progesterone, gestonorone capronate (Depostat) and cyproterone acetate (Androcur) on the metabolism of testosterone in human prostatic adenoma: in vitro and in vivo investigations. J Steroid Biochem. 1975 Jun;6(6):845-51.

**Inhibitor · Natural Compounds · Compound Libraries · Recombinant Proteins**

This product is for Research Use Only · Not for Human or Veterinary or Therapeutic Use

Tel:781-999-4286 E\_mail:info@targetmol.com Address:34 Washington Street,Wellesley Hills,MA 02481