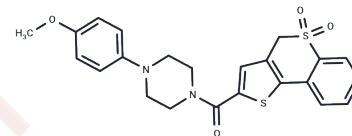


ML349

Chemical Properties

CAS No. : 890819-86-0
 Formula: C₂₃H₂₂N₂O₄S₂
 Molecular Weight: 454.56
 Storage: Powder: -20°C for 3 years | In solvent: -80°C for 1 year
 Actual storage temperature shall be subject to the COA.



Biological Description

Description	ML349 is an inhibitor of LYPLA2 (IC ₅₀ : 144 nM). ML349 is an effective and specific acyl protein thioesterase 2 (APT-2) inhibitor (K _i : 120 nM).
Targets(IC ₅₀)	Phospholipase
In vitro	ML349 is an inhibitor of both LYPLA1 and LYPLA2 with IC ₅₀ s of >3000 and 144 nM, respectively. ML349 also is an inhibitor of acyl protein thioesterase 1 and 2 (APT-1 and APT-2) with K _i s of >10000 and 120±20 nM, respectively. ML348 and ML349 do not reduce cell viability, but they cause a slight activation of AKT in NRAS mutant cells[1][2][3].

Solubility Information

Solubility	DMSO: 12.5 mg/mL (27.5 mM), Sonication is recommended. (< 1 mg/ml refers to the product slightly soluble or insoluble)
------------	---

Preparing Stock Solutions

	1mg	5mg	10mg
1 mM	2.1999 mL	10.9996 mL	21.9993 mL
5 mM	0.440 mL	2.1999 mL	4.3999 mL
10 mM	0.220 mL	1.100 mL	2.1999 mL
50 mM	0.044 mL	0.220 mL	0.440 mL

Please select the appropriate solvent to prepare the stock solution, according to the solubility of the product in different solvents. Please use it as soon as possible.

Note: The dilution table applies only to solid products. For liquid products, please calculate the stock solution based on the stated concentration and/or density.

Reference

Won SJ, et al. Molecular Mechanism for Isoform-Selective Inhibition of Acyl Protein Thioesterases 1 and 2 (APT1 and APT2). ACS Chem Biol. 2016 Dec 16;11(12):3374-3382.

Adibekian A, et al. Characterization of a Selective, Reversible Inhibitor of Lysophospholipase 2 (LYPLA2).

Vujic I, et al. Acyl protein thioesterase 1 and 2 (APT-1, APT-2) inhibitors palmostatin B, ML348 and ML349 have different effects on NRAS mutant melanoma cells. Oncotarget. 2016 Feb 9;7(6):7297-306.

Inhibitor · Natural Compounds · Compound Libraries · Recombinant Proteins

This product is for Research Use Only. Not for Human or Veterinary or Therapeutic Use

Tel:781-999-4286 E_mail:info@targetmol.com Address:34 Washington Street,Wellesley Hills,MA 02481