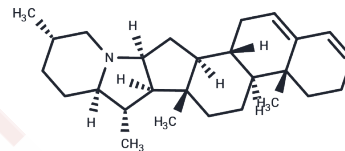


## Solanidiene

## Chemical Properties

CAS No. :	26516-51-8
Formula:	C <sub>27</sub> H <sub>41</sub> N
Molecular Weight:	379.62
Storage:	Powder: -20°C for 3 years   In solvent: -80°C for 1 year Actual storage temperature shall be subject to the COA.



## Biological Description

Description	Solanidiene (Solanthrene) is isolated from the leaves of <i>S. tuberosum</i> (potato plant).
Targets(IC50)	Others

## Preparing Stock Solutions

	1mg	5mg	10mg
1 mM	2.6342 mL	13.1711 mL	26.3421 mL
5 mM	0.5268 mL	2.6342 mL	5.2684 mL
10 mM	0.2634 mL	1.3171 mL	2.6342 mL
50 mM	0.0527 mL	0.2634 mL	0.5268 mL

Please select the appropriate solvent to prepare the stock solution, according to the solubility of the product in different solvents. Please use it as soon as possible.

Note: The dilution table applies only to solid products. For liquid products, please calculate the stock solution based on the stated concentration and/or density.

## Reference

J.Laurila, et al. Formation of parental-type and novel glycoalkaloids in somatic hybrids between *Solanum brevidens* and *S. tuberosum*. *Plant Science*, Volume 118, Issue 2, 16 August 1996, Pages 145-155.

Inhibitor · Natural Compounds · Compound Libraries · Recombinant Proteins

This product is for Research Use Only · Not for Human or Veterinary or Therapeutic Use

Tel:781-999-4286 E\_mail:info@targetmol.com Address:34 Washington Street,Wellesley Hills,MA 02481