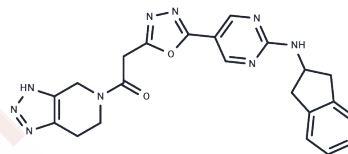


Autotaxin-IN-3

Chemical Properties

CAS No. :	2156655-68-2
Formula:	C ₂₂ H ₂₁ N ₉ O ₂
Molecular Weight:	443.46
Storage:	Powder: -20°C for 3 years In solvent: -80°C for 1 year Actual storage temperature shall be subject to the COA.



Biological Description

Description	Autotaxin-IN-3 is an inhibitor of Autotaxin (IC ₅₀ = 2.4 nM) which is responsible for the increase in lysophosphatidic acid in ascites and plasma.
Targets(IC ₅₀)	PDE

Solubility Information

Solubility	DMSO: 225 mg/mL (507.37 mM),Sonication is recommended. (< 1 mg/ml refers to the product slightly soluble or insoluble)
In vivo Formulation	10% DMSO+40% PEG300+5% Tween 80+45% Saline: 5 mg/mL (11.27 mM),Sonication is recommended. <i>Please add the solvents sequentially, clarifying the solution as much as possible before adding the next one. Dissolve by heating and/or sonication if necessary. Working solution is recommended to be prepared and used immediately. The formulation provided above is for reference purposes only. In vivo formulations may vary and should be modified based on specific experimental conditions.</i>

Preparing Stock Solutions

	1mg	5mg	10mg
1 mM	2.255 mL	11.275 mL	22.5499 mL
5 mM	0.451 mL	2.255 mL	4.510 mL
10 mM	0.2255 mL	1.1275 mL	2.255 mL
50 mM	0.0451 mL	0.2255 mL	0.451 mL

Please select the appropriate solvent to prepare the stock solution, according to the solubility of the product in different solvents. Please use it as soon as possible.

Note: The dilution table applies only to solid products. For liquid products, please calculate the stock solution based on the stated concentration and/or density.

Reference

LEE, Dae Yon, et al. NOVEL COMPOUNDS AS AUTOTAXIN INHIBITORS AND PHARMACEUTICAL COMPOSITIONS COMPRISING THE SAME. Patent O2018212534A1

Inhibitor · Natural Compounds · Compound Libraries · Recombinant Proteins

This product is for Research Use Only · Not for Human or Veterinary or Therapeutic Use

Tel:781-999-4286 E_mail:info@targetmol.com Address:34 Washington Street,Wellesley Hills,MA 02481