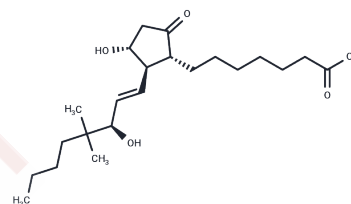


16,16-dimethyl Prostaglandin E1

Chemical Properties

CAS No. :	41692-15-3
Formula:	C ₂₂ H ₃₈ O ₅
Molecular Weight:	382.541
Storage:	Powder: -20°C for 3 years In solvent: -80°C for 1 year Actual storage temperature shall be subject to the COA.



Biological Description

Description	16,16-dimethyl Prostaglandin E1 is a PGE1 (T1626) analog that induces bronchoconstriction and vascular smooth muscle contraction and inhibits indomethacin-induced cell elongation.
Targets(IC50)	Others, Prostaglandin Receptor

Solubility Information

Solubility	Ethanol: >50 mg/mL (from PGE1), Sonication is recommended. PBS (pH 7.2): >1.6 mg/mL (from PGE1), Sonication is recommended. DMF: >100 mg/mL (from PGE1), Sonication is recommended. DMSO: >50 mg/mL (from PGE1), Sonication is recommended. (< 1 mg/ml refers to the product slightly soluble or insoluble)
------------	---

Preparing Stock Solutions

	1mg	5mg	10mg
1 mM	2.6141 mL	13.0705 mL	26.1411 mL
5 mM	0.5228 mL	2.6141 mL	5.2282 mL
10 mM	0.2614 mL	1.3071 mL	2.6141 mL
50 mM	0.0523 mL	0.2614 mL	0.5228 mL

Please select the appropriate solvent to prepare the stock solution, according to the solubility of the product in different solvents. Please use it as soon as possible.

Note: The dilution table applies only to solid products. For liquid products, please calculate the stock solution based on the stated concentration and/or density.

Inhibitor · Natural Compounds · Compound Libraries · Recombinant Proteins

This product is for Research Use Only · Not for Human or Veterinary or Therapeutic Use

Tel: 781-999-4286 E_mail: info@targetmol.com Address: 34 Washington Street, Wellesley Hills, MA 02481