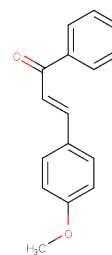


## (E)-3-(4-methoxyphenyl)-1-phenyl-prop-2-en-1-one

## Chemical Properties

CAS No. :	22252-15-9
Formula:	C <sub>16</sub> H <sub>14</sub> O <sub>2</sub>
Molecular Weight:	238.286
Storage:	Powder: -20°C for 3 years   In solvent: -80°C for 1 year Actual storage temperature shall be subject to the COA.



## Biological Description

Description	(E)-3-(4-methoxyphenyl)-1-phenyl-prop-2-en-1-one, with CAS No. 22252-15-9, is a fragment molecule that serves as an important scaffold for molecular linking, expansion, and modification. (E)-3-(4-methoxyphenyl)-1-phenyl-prop-2-en-1-one provides a structural basis and research tool for the design and screening of novel drug candidates, and is commonly used in drug discovery, drug synthesis, and related research.
-------------	--

## Preparing Stock Solutions

	1mg	5mg	10mg
1 mM	4.1966 mL	20.9828 mL	41.9657 mL
5 mM	0.8393 mL	4.1966 mL	8.3931 mL
10 mM	0.4197 mL	2.0983 mL	4.1966 mL
50 mM	0.0839 mL	0.4197 mL	0.8393 mL

Please select the appropriate solvent to prepare the stock solution, according to the solubility of the product in different solvents. Please use it as soon as possible.

Note: The dilution table applies only to solid products. For liquid products, please calculate the stock solution based on the stated concentration and/or density.

Inhibitor · Natural Compounds · Compound Libraries · Recombinant Proteins

This product is for Research Use Only · Not for Human or Veterinary or Therapeutic Use

Tel: 781-999-4286 E\_mail: info@targetmol.com Address: 34 Washington Street, Wellesley Hills, MA 02481