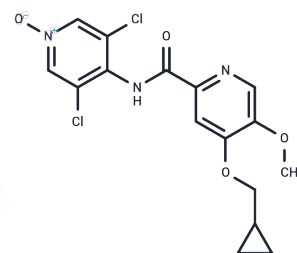


Tilivapram

Chemical Properties

CAS No. :	166741-91-9
Formula:	C ₁₆ H ₁₅ Cl ₂ N ₃ O ₄
Molecular Weight:	384.21
Storage:	Powder: -20°C for 3 years In solvent: -80°C for 1 year Actual storage temperature shall be subject to the COA.



Biological Description

Description	Tilivapram is a PDE4 (phosphodiesterase IV) inhibitor that can be used in the study of mental illness.
Targets(IC50)	PDE

Preparing Stock Solutions

	1mg	5mg	10mg
1 mM	2.6027 mL	13.0137 mL	26.0274 mL
5 mM	0.5205 mL	2.6027 mL	5.2055 mL
10 mM	0.2603 mL	1.3014 mL	2.6027 mL
50 mM	0.0521 mL	0.2603 mL	0.5205 mL

Please select the appropriate solvent to prepare the stock solution, according to the solubility of the product in different solvents. Please use it as soon as possible.

Note: The dilution table applies only to solid products. For liquid products, please calculate the stock solution based on the stated concentration and/or density.

Inhibitor · Natural Compounds · Compound Libraries · Recombinant Proteins

This product is for Research Use Only · Not for Human or Veterinary or Therapeutic Use

Tel: 781-999-4286 E_mail: info@targetmol.com Address: 34 Washington Street, Wellesley Hills, MA 02481