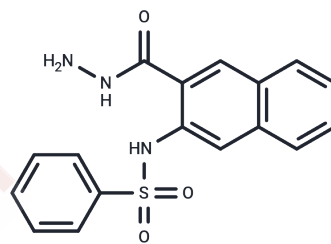


DapL-IN-1

Chemical Properties

| | |
|-------------------|--|
| CAS No. : | 423732-11-0 |
| Formula: | C ₁₇ H ₁₅ N ₃ O ₃ S |
| Molecular Weight: | 341.38 |
| Storage: | Store at low temperature Powder: -20°C for 3 years In solvent: -80°C for 1 year <i>Actual storage temperature shall be subject to the COA.</i> |



Biological Description

| | |
|---------------|--|
| Description | DapL-IN-1 is an inhibitor of L,L-diaminopimelate aminotransferase (DapL), suppressing bacterial and plant DapL activity. DapL-IN-1 shows species-dependent inhibitory sensitivity and provides a basis for developing new antibiotics, herbicides, or algicides, with low toxicity to animals. The differences in binding mode of DapL-IN-1 near active-site residues contribute to this varied biological activity. |
| Targets(IC50) | Others |

Preparing Stock Solutions

| | 1mg | 5mg | 10mg |
|-------|-----------|------------|------------|
| 1 mM | 2.9293 mL | 14.6464 mL | 29.2929 mL |
| 5 mM | 0.5859 mL | 2.9293 mL | 5.8586 mL |
| 10 mM | 0.2929 mL | 1.4646 mL | 2.9293 mL |
| 50 mM | 0.0586 mL | 0.2929 mL | 0.5859 mL |

Please select the appropriate solvent to prepare the stock solution, according to the solubility of the product in different solvents. Please use it as soon as possible.

Note: The dilution table applies only to solid products. For liquid products, please calculate the stock solution based on the stated concentration and/or density.

Reference

- McKinnie SM, et al. Differential response of orthologous L,L-diaminopimelate aminotransferases (DapL) to enzyme inhibitory antibiotic lead compounds. *Bioorg Med Chem.* 2014 Jan 1;22(1):523-30.
- Sebela M, et al. A study on the reactions of plant copper amine oxidase with C3 and C4 aliphatic diamines. *Arch Biochem Biophys.* 2000 Dec 1;384(1):88-99.

Inhibitor · Natural Compounds · Compound Libraries · Recombinant Proteins

This product is for Research Use Only · Not for Human or Veterinary or Therapeutic Use

Tel:781-999-4286 E_mail:info@targetmol.com Address:34 Washington Street,Wellesley Hills,MA 02481