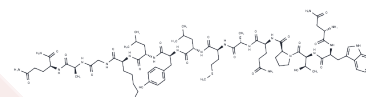


Spexin

Chemical Properties

CAS No. :	1370290-58-6
Formula:	C74H114N20O19S
Molecular Weight:	1619.9
Storage:	Keep away from moisture Powder: -20°C for 3 years In solvent: -80°C for 1 year <small>Actual storage temperature shall be subject to the COA.</small>



Biological Description

Description	Potent galanin receptor 2/3 (GAL2/GAL3) agonist (EC50 values are 45.7 and 112.2 nM, respectively). Exhibits no significant activity at galanin receptor 1. Endogenous satiety-inducing peptide; inhibits long chain fatty acid uptake by adipocytes and decreases food consumption in diet-induced obese mice and rats. Attenuates LH secretion in goldfish. Exhibits anxiolytic effects in vivo.
Targets(IC50)	Apoptosis, Ferroptosis, Autophagy, Neuropeptide Y Receptor

Solubility Information

Solubility	H2O: 1 mg/mL (0.62 mM), Sonication is recommended. (< 1 mg/ml refers to the product slightly soluble or insoluble)
------------	--

Preparing Stock Solutions

	1mg	5mg	10mg
1 mM	0.6173 mL	3.0866 mL	6.1732 mL
5 mM	0.1235 mL	0.6173 mL	1.2346 mL
10 mM	0.0617 mL	0.3087 mL	0.6173 mL
50 mM	0.0123 mL	0.0617 mL	0.1235 mL

Please select the appropriate solvent to prepare the stock solution, according to the solubility of the product in different solvents. Please use it as soon as possible.

Note: The dilution table applies only to solid products. For liquid products, please calculate the stock solution based on the stated concentration and/or density.

Reference

Walewski et al (2014) Spexin is a novel human peptide that reduces adipocyte uptake of long chain fatty acids and causes weight loss in rodents with diet-induced obesity Obesity (Silver Spring) 22 1643 PMID:

Reyes-Alcaraz et al (2016) Development of spexin-based human galanin receptor type II-specific agonists with increased stability in serum and anxiolytic effect in mice. Sci.Rep. 6 21453 PMID:

Kim et al (2014) Coevolution of the spexin/galanin/kisspeptin family: Spexin activates galanin receptor type II and III. Endocrinology 155 1864 PMID:

Inhibitor · Natural Compounds · Compound Libraries · Recombinant Proteins

This product is for Research Use Only · Not for Human or Veterinary or Therapeutic Use

Tel:781-999-4286 E_mail:info@targetmol.com Address:34 Washington Street,Wellesley Hills,MA 02481