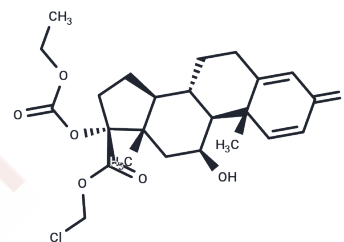


Loteprednol etabonate

Chemical Properties

CAS No. : 82034-46-6
 Formula: C₂₄H₃₁ClO₇
 Molecular Weight: 466.95
 Storage: Powder: -20°C for 3 years | In solvent: -80°C for 1 year
Actual storage temperature shall be subject to the COA.



Biological Description

| | |
|---------------|---|
| Description | Loteprednol etabonate (Lotemax) is an ophthalmic analog of the corticosteroid prednisolone with anti-inflammatory activity. |
| Targets(IC50) | Glucocorticoid Receptor, Antibacterial, Antibiotic |
| In vitro | Loteprednol possesses a metabolically labile function, the 17beta-ester, that is designed to be rapidly deactivated in the systemic circulation. Loteprednol etabonate exhibits a binding affinity which is 4.3 times that of dexamethasone, both compounds having a Hill factor close to 1 whereas PJ90 and PJ91 does not show any affinity to the receptor. [1] |

Solubility Information

| | |
|---------------------|--|
| Solubility | H ₂ O: < 1 mg/mL (insoluble or slightly soluble), DMSO: 50 mg/mL (107.08 mM), Sonication is recommended. Ethanol: 4 mg/mL (8.57 mM), Sonication is recommended. (< 1 mg/ml refers to the product slightly soluble or insoluble) |
| In vivo Formulation | 10% DMSO+90% Corn Oil: 2.5 mg/mL (5.35 mM), Sonication is recommended. <i>Please add the solvents sequentially, clarifying the solution as much as possible before adding the next one. Dissolve by heating and/or sonication if necessary. Working solution is recommended to be prepared and used immediately. The formulation provided above is for reference purposes only. In vivo formulations may vary and should be modified based on specific experimental conditions.</i> |

Preparing Stock Solutions

| | 1mg | 5mg | 10mg |
|-------|-----------|------------|------------|
| 1 mM | 2.1416 mL | 10.7078 mL | 21.4156 mL |
| 5 mM | 0.4283 mL | 2.1416 mL | 4.2831 mL |
| 10 mM | 0.2142 mL | 1.0708 mL | 2.1416 mL |
| 50 mM | 0.0428 mL | 0.2142 mL | 0.4283 mL |

Please select the appropriate solvent to prepare the stock solution, according to the solubility of the product in different solvents. Please use it as soon as possible.

Note: The dilution table applies only to solid products. For liquid products, please calculate the stock solution based on the stated concentration and/or density.

Reference

- Druzgala P, et al. *J Steroid Biochem Mol Biol*,1991, 38(2), 149-154.
- Buris LF, et al. *Pharmazie*,1999, 54(1), 58-61.
- Bodor N, et al. *Pharm Res*,1995, 12(6), 869-874.
- Bodor N, et al. *Pharm Res*,1995, 12(6), 875-879.

Inhibitor · Natural Compounds · Compound Libraries · Recombinant Proteins

This product is for Research Use Only· Not for Human or Veterinary or Therapeutic Use

Tel:781-999-4286 E_mail:info@targetmol.com Address:34 Washington Street,Wellesley Hills,MA 02481