

CPTH2 (hydrochloride) (357649-93-5 free base)

Chemical Properties

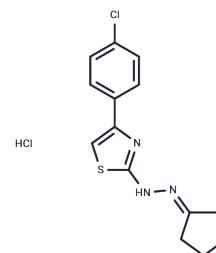
CAS No. : 2108899-91-6

Formula: C₁₄H₁₅Cl₂N₃S

Molecular Weight: 328.26

Storage: Powder: -20°C for 3 years | In solvent: -80°C for 1 year

Actual storage temperature shall be subject to the COA.



Biological Description

| | |
|---------------|---|
| Description | CPTH2 is an inhibitor of the HAT activity of Gcn5. |
| Targets(IC50) | Apoptosis,Others,Histone Acetyltransferase |
| In vitro | In vitro: The previous study identified a novel molecule named CPTH2, which was selected based on its inhibitory effect on the growth of a gcn5Delta strain. This study indicated a specific chemical-genetic interaction between CPTH2 and HAT Gcn5p, suggesting that CPTH2 could inhibit the dependent functional network of Gcn5p. In addition, CPTH2 was found to be able to inhibit an in-vitro HAT reaction, which could be reversed by increasing the concentration of histone H3 [1]. |
| In vivo | In vivo: CPTH2 could decrease the acetylation of bulk histone H3 at the specific H3-AcK14 site [1]. |

Solubility Information

| | |
|------------|---|
| Solubility | DMSO: 16 mg/mL (48.74 mM),Sonication is recommended. Ethanol: ≤5 mg/mL,Sonication is recommended. (< 1 mg/ml refers to the product slightly soluble or insoluble) |
|------------|---|

Preparing Stock Solutions

| | 1mg | 5mg | 10mg |
|-------|------------|------------|-------------|
| 1 mM | 3.0464 mL | 15.2318 mL | 30.4637 mL |
| 5 mM | 0.6093 mL | 3.0464 mL | 6.0927 mL |
| 10 mM | 0.3046 mL | 1.5232 mL | 3.0464 mL |
| 50 mM | 0.0609 mL | 0.3046 mL | 0.6093 mL |

Please select the appropriate solvent to prepare the stock solution, according to the solubility of the product in different solvents. Please use it as soon as possible.

Note: The dilution table applies only to solid products. For liquid products, please calculate the stock solution based on the stated concentration and/or density.

Inhibitor · Natural Compounds · Compound Libraries · Recombinant Proteins

This product is for Research Use Only · Not for Human or Veterinary or Therapeutic Use

Tel:781-999-4286 E_mail:info@targetmol.com Address:34 Washington Street,Wellesley Hills,MA 02481