

PHOME

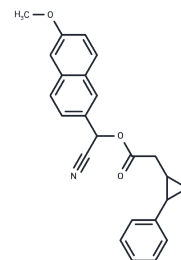
Chemical Properties

CAS No. : 1028430-42-3

Formula: C₂₃H₁₉NO₄

Molecular Weight: 373.4

Storage: Store at low temperature, Keep away from direct sunlight
 Powder: -20°C for 3 years | In solvent: -80°C for 1 year
Actual storage temperature shall be subject to the COA.



Biological Description

Description	PHOME is an enzyme substrate used in research on neurological diseases and inflammation.
Targets(IC50)	Others

Solubility Information

Solubility	DMSO: 8 mg/mL (21.42 mM), Sonication is recommended. DMF: 8 mg/mL (21.42 mM), Sonication is recommended. (< 1 mg/ml refers to the product slightly soluble or insoluble)
In vivo Formulation	10% DMSO+90% Corn Oil: 0.5 mg/mL (1.34 mM), Sonication is recommended. <i>Please add the solvents sequentially, clarifying the solution as much as possible before adding the next one. Dissolve by heating and/or sonication if necessary. Working solution is recommended to be prepared and used immediately. The formulation provided above is for reference purposes only. In vivo formulations may vary and should be modified based on specific experimental conditions.</i>

Preparing Stock Solutions

	1mg	5mg	10mg
1 mM	2.6781 mL	13.3905 mL	26.7809 mL
5 mM	0.5356 mL	2.6781 mL	5.3562 mL
10 mM	0.2678 mL	1.339 mL	2.6781 mL
50 mM	0.0536 mL	0.2678 mL	0.5356 mL

Please select the appropriate solvent to prepare the stock solution, according to the solubility of the product in different solvents. Please use it as soon as possible.

Note: The dilution table applies only to solid products. For liquid products, please calculate the stock solution based on the stated concentration and/or density.

Reference

Chen, Guoliang, et al. sEH inhibitor or pharmaceutically acceptable composition thereof, and preparation method and application thereof.

Inhibitor · Natural Compounds · Compound Libraries · Recombinant Proteins

This product is for Research Use Only · Not for Human or Veterinary or Therapeutic Use

Tel:781-999-4286 E_mail:info@targetmol.com Address:34 Washington Street,Wellesley Hills,MA 02481