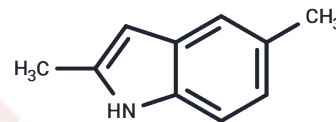


## 2,5-Dimethylindole

## Chemical Properties

CAS No. :	1196-79-8
Formula:	C <sub>10</sub> H <sub>11</sub> N
Molecular Weight:	145.2
Storage:	Powder: -20°C for 3 years   In solvent: -80°C for 1 year Actual storage temperature shall be subject to the COA.



## Biological Description

Description	2,5-Dimethylindole, with CAS No. 1196-79-8, is a fragment molecule that serves as an important scaffold for molecular linking, expansion, and modification. 2,5-Dimethylindole provides a structural basis and research tool for the design and screening of novel drug candidates, and is commonly used in drug discovery, drug synthesis, and related research.
-------------	-------------------------------------------------------------------------------------------------------------------------------------------------------------------------------------------------------------------------------------------------------------------------------------------------------------------------------------------------------------------

## Preparing Stock Solutions

	1mg	5mg	10mg
1 mM	6.8871 mL	34.4353 mL	68.8705 mL
5 mM	1.3774 mL	6.8871 mL	13.7741 mL
10 mM	0.6887 mL	3.4435 mL	6.8871 mL
50 mM	0.1377 mL	0.6887 mL	1.3774 mL

Please select the appropriate solvent to prepare the stock solution, according to the solubility of the product in different solvents. Please use it as soon as possible.

Note: The dilution table applies only to solid products. For liquid products, please calculate the stock solution based on the stated concentration and/or density.

**Inhibitor · Natural Compounds · Compound Libraries · Recombinant Proteins**

This product is for Research Use Only · Not for Human or Veterinary or Therapeutic Use

Tel: 781-999-4286 E\_mail: info@targetmol.com Address: 34 Washington Street, Wellesley Hills, MA 02481