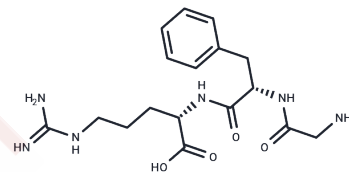


Gly-Phe-Arg

Chemical Properties

CAS No. :	121822-47-7
Formula:	C17H26N6O4
Molecular Weight:	378.43
Storage:	Keep away from moisture Powder: -20°C for 3 years In solvent: -80°C for 1 year <small>Actual storage temperature shall be subject to the COA.</small>



Biological Description

Description	Gly-Phe-Arg is a highly potent synthetic tripeptide that mimics the pumping pheromone of the mud-crab.
-------------	--

Solubility Information

Solubility	H2O: Soluble, (< 1 mg/ml refers to the product slightly soluble or insoluble)
------------	---

Preparing Stock Solutions

	1mg	5mg	10mg
1 mM	2.6425 mL	13.2125 mL	26.425 mL
5 mM	0.5285 mL	2.6425 mL	5.285 mL
10 mM	0.2642 mL	1.3212 mL	2.6425 mL
50 mM	0.0528 mL	0.2642 mL	0.5285 mL

Please select the appropriate solvent to prepare the stock solution, according to the solubility of the product in different solvents. Please use it as soon as possible.

Note: The dilution table applies only to solid products. For liquid products, please calculate the stock solution based on the stated concentration and/or density.

Reference

Pettis RJ, et al. Superpotent synthetic tripeptide mimics of the mud-crab pumping pheromone. *Int J Pept Protein Res.* 1993 Oct;42(4):312-9.

Inhibitor · Natural Compounds · Compound Libraries · Recombinant Proteins

This product is for Research Use Only · Not for Human or Veterinary or Therapeutic Use

Tel: 781-999-4286 E_mail: info@targetmol.com Address: 34 Washington Street, Wellesley Hills, MA 02481