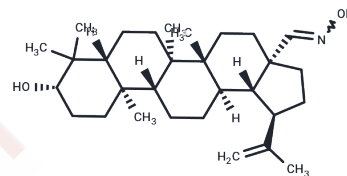


Betulinic Aldehyde oxime

Chemical Properties

CAS No. :	25613-12-1
Formula:	C ₃₀ H ₄₉ NO ₂
Molecular Weight:	455.727
Storage:	Powder: -20°C for 3 years In solvent: -80°C for 1 year Actual storage temperature shall be subject to the COA.



Biological Description

Description	Betulinic aldehyde oxime is a pentacyclic triterpenoid and derivative of the cholesterol biosynthesis inhibitor betulin .1It is active against <i>E. aerogenes</i> , <i>E. coli</i> , <i>E. faecalis</i> , <i>P. aeruginosa</i> , <i>S. aureus</i> , and <i>C. albicans</i> , as well as <i>L. donovani</i> mastigotes, when used at a concentration of 50 μM.1,2Betulinic aldehyde oxime (50 μM) is cytotoxic to Huh7 hepatocellular carcinoma cells.2
Targets(IC50)	Others,Antibacterial

Solubility Information

Solubility	DMSO: 30 mg/mL (65.83 mM),Sonication is recommended. DMF: 30 mg/mL (65.83 mM),Sonication is recommended. Ethanol: 30 mg/mL (65.83 mM),Sonication is recommended. (< 1 mg/ml refers to the product slightly soluble or insoluble)
------------	---

Preparing Stock Solutions

	1mg	5mg	10mg
1 mM	2.1943 mL	10.9714 mL	21.9428 mL
5 mM	0.4389 mL	2.1943 mL	4.3886 mL
10 mM	0.2194 mL	1.0971 mL	2.1943 mL
50 mM	0.0439 mL	0.2194 mL	0.4389 mL

Please select the appropriate solvent to prepare the stock solution, according to the solubility of the product in different solvents. Please use it as soon as possible.

Note: The dilution table applies only to solid products. For liquid products, please calculate the stock solution based on the stated concentration and/or density.

Reference

Alakurtti, S., Bergström, P., Sacerdoti-Sierra, N., et al. Anti-leishmanial activity of betulin derivatives. *J. Antibiot. (Tokyo)* 63(3):123-126 (2010)

Haque, S., Nawrot, D.A., Alakurtti, S., et al. Screening and characterisation of antimicrobial properties of semisynthetic betulin derivatives. *PLoS One* 9(7):e102696 (2014)

Inhibitor · Natural Compounds · Compound Libraries · Recombinant Proteins

This product is for Research Use Only · Not for Human or Veterinary or Therapeutic Use

Tel: 781-999-4286 E_mail: info@targetmol.com Address: 34 Washington Street, Wellesley Hills, MA 02481