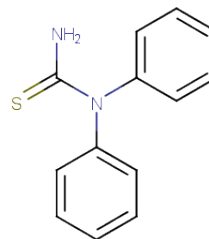


1,1-Diphenyl-2-thiourea

Chemical Properties

CAS No. :	3898-08-6
Formula:	C13H12N2S
Molecular Weight:	228.31
Storage:	Powder: -20°C for 3 years In solvent: -80°C for 1 year Actual storage temperature shall be subject to the COA.



Biological Description

Description	1,1-Diphenyl-2-thiourea, with CAS No. 3898-08-6, is a fragment molecule that serves as an important scaffold for molecular linking, expansion, and modification. 1,1-Diphenyl-2-thiourea provides a structural basis and research tool for the design and screening of novel drug candidates, and is commonly used in drug discovery, drug synthesis, and related research.
-------------	---

Preparing Stock Solutions

	1mg	5mg	10mg
1 mM	4.380 mL	21.900 mL	43.8001 mL
5 mM	0.876 mL	4.380 mL	8.760 mL
10 mM	0.438 mL	2.190 mL	4.380 mL
50 mM	0.0876 mL	0.438 mL	0.876 mL

Please select the appropriate solvent to prepare the stock solution, according to the solubility of the product in different solvents. Please use it as soon as possible.

Note: The dilution table applies only to solid products. For liquid products, please calculate the stock solution based on the stated concentration and/or density.

Inhibitor · Natural Compounds · Compound Libraries · Recombinant Proteins

This product is for Research Use Only · Not for Human or Veterinary or Therapeutic Use

Tel: 781-999-4286 E_mail: info@targetmol.com Address: 34 Washington Street, Wellesley Hills, MA 02481