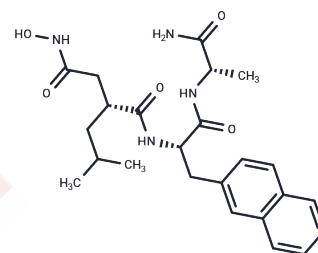


TAPI 0

Chemical Properties

CAS No. :	163958-73-4
Formula:	C ₂₄ H ₃₂ N ₄ O ₅
Molecular Weight:	456.54
Storage:	Keep away from moisture Powder: -20°C for 3 years In solvent: -80°C for 1 year <small>Actual storage temperature shall be subject to the COA.</small>



Biological Description

Description	ADAM-17 (TACE) and MMP inhibitor; attenuates TNF- α processing. Acts in concert with GM6001 to inhibit Chlamydia trachomatis growth.
Targets(IC50)	MMP, Antibacterial, TNF

Solubility Information

Solubility	DMSO: 10 mg/mL (21.9 mM), Sonication is recommended. (< 1 mg/ml refers to the product slightly soluble or insoluble)
------------	--

Preparing Stock Solutions

	1mg	5mg	10mg
1 mM	2.1904 mL	10.9519 mL	21.9039 mL
5 mM	0.4381 mL	2.1904 mL	4.3808 mL
10 mM	0.219 mL	1.0952 mL	2.1904 mL
50 mM	0.0438 mL	0.219 mL	0.4381 mL

Please select the appropriate solvent to prepare the stock solution, according to the solubility of the product in different solvents. Please use it as soon as possible.

Note: The dilution table applies only to solid products. For liquid products, please calculate the stock solution based on the stated concentration and/or density.

Reference

Balakrishnan et al (2006) Metalloprotease inhibitors GM6001 and TAPI-0 inhibit the obligate intracellular human pathogen Chlamydia trachomatis by targeting peptide deformylase of the bacterium. J.Biol.Chem. 281 16691

PMID:

Rzeniewicz et al (2015) L-selectin shedding is activated specifically within transmigrating pseudopods of monocytes to regulate cell polarity in vitro. Proc.Natl.Acad.Sci.USA. 112 E1461 PMID:

Inhibitor · Natural Compounds · Compound Libraries · Recombinant Proteins

This product is for Research Use Only · Not for Human or Veterinary or Therapeutic Use

Tel:781-999-4286 E_mail:info@targetmol.com Address:34 Washington Street,Wellesley Hills,MA 02481