

## Lysophosphatidylethanolamines (egg)

## Chemical Properties

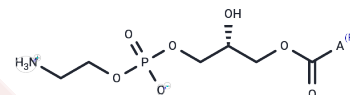
CAS No. : 97281-40-8

Formula: N/A

Molecular Weight:

Storage: Powder: -20°C for 3 years | In solvent: -80°C for 1 year

Actual storage temperature shall be subject to the COA.



## Biological Description

Description	Lysophosphatidylethanolamines (egg) are the partial hydrolysis products of phosphatidylethanolamine.
Targets(IC50)	Others,Endogenous Metabolite

## Solubility Information

Solubility	Chloroform: Soluble (< 1 mg/ml refers to the product slightly soluble or insoluble)
------------	--

Inhibitor · Natural Compounds · Compound Libraries · Recombinant Proteins

This product is for Research Use Only· Not for Human or Veterinary or Therapeutic Use

Tel:781-999-4286

E\_mail:info@targetmol.com

Address:34 Washington Street,Wellesley Hills,MA 02481