

Beta-Sheet Breaker Peptide iA β 5 Acetate

Chemical Properties

CAS No. :

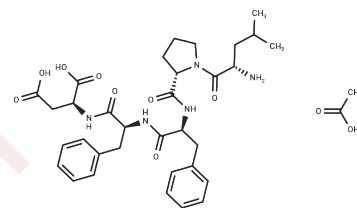
Formula: C35H47N5O10

Molecular Weight: 697.78

Keep away from moisture

Storage: Powder: -20°C for 3 years | In solvent: -80°C for 1 year

Actual storage temperature shall be subject to the COA.



Biological Description

Description	Beta-Sheet Breaker Peptide iA β 5 Acetate (C33H43N5O8) inhibit amyloidogenesis in rat brain models.
Targets(IC50)	Others
In vivo	5-residue peptide that inhibits amyloid beta-protein fibrillogenesis, disassembles preformed fibrils in vitro and prevents neuronal death induced by fibrils in cell culture. In addition, the beta-sheet breaker peptide significantly reduces amyloid beta-protein deposition in vivo and completely blocks the formation of amyloid fibrils in a rat brain model of amyloidosis. These findings may provide the basis for a new therapeutic approach to prevent amyloidosis in Alzheimer's disease.

Solubility Information

Solubility	DMSO: 60 mg/mL (85.99 mM),Sonication is recommended. (< 1 mg/ml refers to the product slightly soluble or insoluble)
------------	---

Preparing Stock Solutions

	1mg	5mg	10mg
1 mM	1.4331 mL	7.1656 mL	14.3312 mL
5 mM	0.2866 mL	1.4331 mL	2.8662 mL
10 mM	0.1433 mL	0.7166 mL	1.4331 mL
50 mM	0.0287 mL	0.1433 mL	0.2866 mL

Please select the appropriate solvent to prepare the stock solution, according to the solubility of the product in different solvents. Please use it as soon as possible.

Note: The dilution table applies only to solid products. For liquid products, please calculate the stock solution based on the stated concentration and/or density.

Reference

Soto C , Sigurdsson E M , Morelli L , et al. [[beta]]-sheet breaker peptides inhibit fibrillogenesis in a rat brain model of amyloidosis: Implications for Alzheimer's therapy]]. Nature Medicine, 1998, 4(7):822-826.

Inhibitor · Natural Compounds · Compound Libraries · Recombinant Proteins

This product is for Research Use Only· Not for Human or Veterinary or Therapeutic Use

Tel:781-999-4286 E_mail:info@targetmol.com Address:34 Washington Street,Wellesley Hills,MA 02481