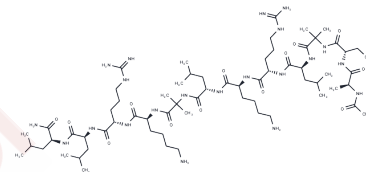


COG1410

## Chemical Properties

CAS No. : 878009-24-6  
 Formula: C64H121N21O14  
 Molecular Weight: 1408.78  
 Storage: Keep away from moisture  
 Powder: -20°C for 3 years | In solvent: -80°C for 1 year  
 Actual storage temperature shall be subject to the COA.



## Biological Description

Description	COG-1410 is an apolipoprotein E (apoE) peptide mimetic.
Targets(IC50)	Apoptosis

## Preparing Stock Solutions

	1mg	5mg	10mg
1 mM	0.7098 mL	3.5492 mL	7.0983 mL
5 mM	0.142 mL	0.7098 mL	1.4197 mL
10 mM	0.071 mL	0.3549 mL	0.7098 mL
50 mM	0.0142 mL	0.071 mL	0.142 mL

Please select the appropriate solvent to prepare the stock solution, according to the solubility of the product in different solvents. Please use it as soon as possible.

Note: The dilution table applies only to solid products. For liquid products, please calculate the stock solution based on the stated concentration and/or density.

## Reference

Latypova EM, Timoshenko SI, Kislik GA, Vitek M, Shvartsman AL, Sarantseva SV. [Investigation of neuroprotective activity of apolipoprotein E peptide mimetic Cog1410 in transgenic lines of Drosophila melanogaster]. Biomed Khim. 2014 Jul-Aug;60(4):515-21. Russian. PubMed PMID: 25249536.

**Inhibitor · Natural Compounds · Compound Libraries · Recombinant Proteins**

This product is for Research Use Only · Not for Human or Veterinary or Therapeutic Use

Tel:781-999-4286 E\_mail:info@targetmol.com Address:34 Washington Street,Wellesley Hills,MA 02481