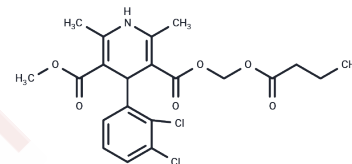


Clevidipine

Chemical Properties

CAS No. :	167221-71-8
Formula:	C ₂₁ H ₂₃ Cl ₂ N ₀ O ₆
Molecular Weight:	456.32
Storage:	Powder: -20°C for 3 years In solvent: -80°C for 1 year Actual storage temperature shall be subject to the COA.



Biological Description

Description	Clevidipine (Clevidipine butyrate) is a dihydropyridine L-type calcium channel blocker that is selective for vascular smooth muscle and is indicated for blood pressure reduction when oral therapy is not an option.
Targets(IC50)	Calcium Channel,AChR

Solubility Information

Solubility	Ethanol: 3 mg/mL (6.57 mM),Sonication is recommended. DMSO: 84 mg/mL (184.08 mM),Sonication is recommended. (< 1 mg/ml refers to the product slightly soluble or insoluble)
In vivo Formulation	10% DMSO+40% PEG300+5% Tween 80+45% Saline: 3.3 mg/mL (7.23 mM),Sonication is recommended. <i>Please add the solvents sequentially, clarifying the solution as much as possible before adding the next one. Dissolve by heating and/or sonication if necessary. Working solution is recommended to be prepared and used immediately. The formulation provided above is for reference purposes only. In vivo formulations may vary and should be modified based on specific experimental conditions.</i>

Preparing Stock Solutions

	1mg	5mg	10mg
1 mM	2.1914 mL	10.9572 mL	21.9144 mL
5 mM	0.4383 mL	2.1914 mL	4.3829 mL
10 mM	0.2191 mL	1.0957 mL	2.1914 mL
50 mM	0.0438 mL	0.2191 mL	0.4383 mL

Please select the appropriate solvent to prepare the stock solution, according to the solubility of the product in different solvents. Please use it as soon as possible.

Note: The dilution table applies only to solid products. For liquid products, please calculate the stock solution based on the stated concentration and/or density.

Reference

Ericsson H, et al. Eur J Pharm Sci. 1999 Apr;8(1):29-37.

Inhibitor · Natural Compounds · Compound Libraries · Recombinant Proteins

This product is for Research Use Only · Not for Human or Veterinary or Therapeutic Use

Tel:781-999-4286 E_mail:info@targetmol.com Address:34 Washington Street,Wellesley Hills,MA 02481