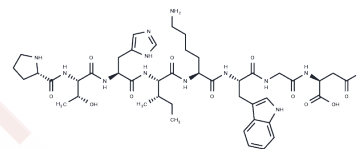


Tuna AI

Chemical Properties

CAS No. :	117620-76-5
Formula:	C44H64N12O12
Molecular Weight:	953.06
Storage:	Keep away from moisture Powder: -20°C for 3 years In solvent: -80°C for 1 year <small>Actual storage temperature shall be subject to the COA.</small>



Biological Description

Description	Tuna AI is an inhibitor of the angiotensin-converting enzyme. Tuna AI is a bioactive chemical.
Targets(IC50)	Others,Angiotensin-converting Enzyme (ACE)

Preparing Stock Solutions

	1mg	5mg	10mg
1 mM	1.0493 mL	5.2463 mL	10.4925 mL
5 mM	0.2099 mL	1.0493 mL	2.0985 mL
10 mM	0.1049 mL	0.5246 mL	1.0493 mL
50 mM	0.021 mL	0.1049 mL	0.2099 mL

Please select the appropriate solvent to prepare the stock solution, according to the solubility of the product in different solvents. Please use it as soon as possible.

Note: The dilution table applies only to solid products. For liquid products, please calculate the stock solution based on the stated concentration and/or density.

Reference

- Kohama Y, Kuroda T, Itoh S, Mimura T. Tuna muscle peptide, PTHIKWGD, inhibits leukocyte-mediated injury and leukocyte adhesion to cultured endothelial cells. *Biol Pharm Bull.* 1996 Jan;19(1):139-41. PubMed PMID: 8820927.
- Kohama Y, Kuroda T, Iida K, Itoh S, Mimura T. Inhibitory effect of tuna peptide on endothelin production in cultured endothelial cells. *Biol Pharm Bull.* 1994 Jul;17(7):886-8. PubMed PMID: 8000369.
- Kohama Y, Oka H, Murayama N, Iida K, Itoh M, Itoh M, Ying X, Mimura T. Increase of migration of cultured endothelial cells by angiotensin-converting enzyme inhibitor derived from tuna muscle. *J Pharmacobiodyn.* 1992 May;15(5):223-9. PubMed PMID: 1527698.
- Kohama Y, Oka H, Matsumoto S, Nakagawa T, Miyamoto T, Mimura T, Nagase Y, Satake M, Takane T, Fujita T. Biological properties of angiotensin-converting enzyme inhibitor derived from tuna muscle. *J Pharmacobiodyn.* 1989 Sep;12(9):566-71. PubMed PMID: 2614645.

Inhibitor · Natural Compounds · Compound Libraries · Recombinant Proteins

This product is for Research Use Only · Not for Human or Veterinary or Therapeutic Use

Tel:781-999-4286 E_mail:info@targetmol.com Address:34 Washington Street,Wellesley Hills,MA 02481