

20(R)-Ginsenoside Rh2

Chemical Properties

CAS No. : 112246-15-8

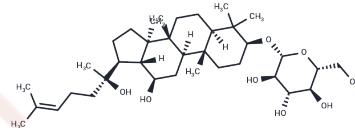
Formula: C₃₆H₆₂O₈

Molecular Weight: 622.87

Keep away from direct sunlight

Storage: Powder: -20°C for 3 years | In solvent: -80°C for 1 year

Actual storage temperature shall be subject to the COA.



Biological Description

Description	20(R)-Ginsenoside Rh2 (Ginsenoside Rh2) is a minor stereoisomer of ginsenoside Rh2, possesses matrix metalloproteinase inhibitory.
Targets(IC50)	Apoptosis, MMP, Akt, NO Synthase, HSV, DNA/RNA Synthesis, Prostaglandin Receptor, ROS

Solubility Information

Solubility	DMSO: 23.7 mg/mL (38.05 mM), Sonication is recommended. (< 1 mg/ml refers to the product slightly soluble or insoluble)
------------	--

Preparing Stock Solutions

	1mg	5mg	10mg
1 mM	1.6055 mL	8.0274 mL	16.0547 mL
5 mM	0.3211 mL	1.6055 mL	3.2109 mL
10 mM	0.1605 mL	0.8027 mL	1.6055 mL
50 mM	0.0321 mL	0.1605 mL	0.3211 mL

Please select the appropriate solvent to prepare the stock solution, according to the solubility of the product in different solvents. Please use it as soon as possible.

Note: The dilution table applies only to solid products. For liquid products, please calculate the stock solution based on the stated concentration and/or density.

Reference

- Choi WY, et al. Anti-inflammatory, antioxidative and matrix metalloproteinase inhibitory properties of 20(R)-ginsenoside Rh2 in cultured macrophages and keratinocytes. *J Pharm Pharmacol.* 2013 Feb;65(2):310-6.
- Chen Z, Ni R, Hu Y, et al. A natural protopanaxatriol from *Panax notoginseng* enhances osteosarcoma sensitivity to ferroptosis via ASCL4 upregulation. *Journal of Functional Foods.* 2024, 122: 106488.
- Zhang C, et al. [Effects of 20 (S) -ginsenoside Rh2 and 20 (R) -ginsenoside Rh2 on proliferation and apoptosis of human lung adenocarcinoma A549 cells]. *Zhongguo Zhong Yao Za Zhi.* 2011 Jun;36(12):1670-4.

Inhibitor · Natural Compounds · Compound Libraries · Recombinant Proteins

This product is for Research Use Only · Not for Human or Veterinary or Therapeutic Use

Tel: 781-999-4286 E_mail: info@targetmol.com Address: 34 Washington Street, Wellesley Hills, MA 02481