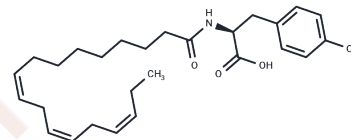


N-(α -Linolenoyl) Tyrosine

Chemical Properties

CAS No. :	259143-19-6
Formula:	C ₂₇ H ₃₉ NO ₄
Molecular Weight:	441.6
Storage:	Keep away from moisture Powder: -20°C for 3 years In solvent: -80°C for 1 year <small>Actual storage temperature shall be subject to the COA.</small>



Biological Description

Description	Certain chronic neurologic disorders, such as Parkinson's disease, are caused by an insufficiency of the neurotransmitter dopamine secondary to the degeneration of substantia nigra dopaminergic neurons. N-(α -Linolenoyl) tyrosine (NALT) is a simple α -amide conjugate between the ω -3 essential fatty acid α -linolenate and the amino acid tyrosine. α -Linolenate is an important precursor to docosahexaenoic acid (DHA), a prominent brain polyunsaturated fatty acid, while tyrosine is the metabolic precursor for neuronal dopamine synthesis. NALT was prepared as a method for enhancing central nervous system (CNS) dopamine content by facilitated transport of the tyrosine precursor across the blood-brain barrier. In experimental rat models of dopamine insufficiency, NALT increased CNS dopamine levels and exhibited an activity profile consistent with an anti-Parkinson's therapeutic agent.
Targets(IC50)	Amino Acids and Derivatives

Solubility Information

Solubility	DMF: 30 mg/mL (67.93 mM), Sonication is recommended. PBS (pH 7.2): 1 mg/mL (2.26 mM), Sonication is recommended. Ethanol: 30 mg/mL (67.93 mM), Sonication is recommended. DMSO: 30 mg/mL (67.93 mM), Sonication is recommended. (< 1 mg/ml refers to the product slightly soluble or insoluble)
------------	--

Preparing Stock Solutions

	1mg	5mg	10mg
1 mM	2.2645 mL	11.3225 mL	22.6449 mL
5 mM	0.4529 mL	2.2645 mL	4.529 mL
10 mM	0.2264 mL	1.1322 mL	2.2645 mL
50 mM	0.0453 mL	0.2264 mL	0.4529 mL

Please select the appropriate solvent to prepare the stock solution, according to the solubility of the product in different solvents. Please use it as soon as possible.

Note: The dilution table applies only to solid products. For liquid products, please calculate the stock solution based on the stated concentration and/or density.

Inhibitor · Natural Compounds · Compound Libraries · Recombinant Proteins

This product is for Research Use Only · Not for Human or Veterinary or Therapeutic Use

Tel:781-999-4286 E_mail:info@targetmol.com Address:34 Washington Street,Wellesley Hills,MA 02481