

Lp-PLA2-IN-1

## Chemical Properties

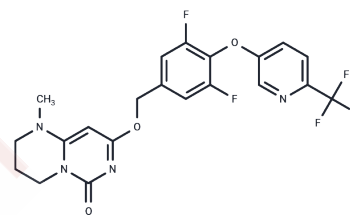
CAS No. : 1420367-28-7

Formula: C<sub>21</sub>H<sub>17</sub>F<sub>5</sub>N<sub>4</sub>O<sub>3</sub>

Molecular Weight: 468.38

Storage: Powder: -20°C for 3 years | In solvent: -80°C for 1 year

Actual storage temperature shall be subject to the COA.



## Biological Description

Description	Lp-PLA2-IN-1 (Lp-PLA2 inhibitor 1) suppresses Lp-PLA2 activity processes for their preparation. Lp-PLA2-IN-1 (Lp-PLA2 inhibitor 1) also inhibits to compositions containing them and to their use in the treatment of diseases associated with the activity of Lp-PLA2, for example, atherosclerosis, Alzheimer's disease.
Targets(IC50)	Phospholipase
In vitro	Lp-PLA2 is a phospholipase A2 enzyme involved in the hydrolysis of lipoprotein lipids or phospholipids. Lp-PLA2 travels with LDL and rapidly cleaves oxidized phosphatidylcholine molecules derived from the oxidation of LDL[1].

## Solubility Information

Solubility	Ethanol: 20 mg/mL (42.7 mM), Sonication is recommended. (< 1 mg/ml refers to the product slightly soluble or insoluble)
------------	--

## Preparing Stock Solutions

	1mg	5mg	10mg
1 mM	2.135 mL	10.6751 mL	21.3502 mL
5 mM	0.427 mL	2.135 mL	4.270 mL
10 mM	0.2135 mL	1.0675 mL	2.135 mL
50 mM	0.0427 mL	0.2135 mL	0.427 mL

Please select the appropriate solvent to prepare the stock solution, according to the solubility of the product in different solvents. Please use it as soon as possible.

Note: The dilution table applies only to solid products. For liquid products, please calculate the stock solution based on the stated concentration and/or density.

Reference

Zehong Wan, et al. Bicyclic pyrimidone compounds. WO2013014185A1.

**Inhibitor · Natural Compounds · Compound Libraries · Recombinant Proteins**

This product is for Research Use Only. Not for Human or Veterinary or Therapeutic Use

Tel:781-999-4286 E\_mail:info@targetmol.com Address:34 Washington Street,Wellesley Hills,MA 02481