

CLR1501

Chemical Properties

CAS No. : 1250963-36-0

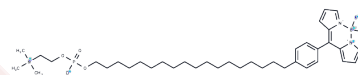
Formula: C₃₈H₅₉BF₂N₃O₄P

Molecular Weight: 701.67

Keep away from direct sunlight

Storage: Powder: -20°C for 3 years | In solvent: -80°C for 1 year

Actual storage temperature shall be subject to the COA.



Biological Description

Description	CLR1501 is a fluorescently labeled CLR1404 analog and a cancer cell-selective fluorescence compound[1][2].
Targets(IC50)	Others
In vitro	CLR1501 demonstrates a five- to ninefold higher uptake in cancer cell lines compared to normal fibroblasts in vitro[1]. It selectively targets tumors both in vitro and in vivo for human glioblastoma stem-like (GSC) cell lines and xenografts[2], with excitation/emission peaks at 500/517 nm.

Preparing Stock Solutions

	1mg	5mg	10mg
1 mM	1.4252 mL	7.1259 mL	14.2517 mL
5 mM	0.285 mL	1.4252 mL	2.8503 mL
10 mM	0.1425 mL	0.7126 mL	1.4252 mL
50 mM	0.0285 mL	0.1425 mL	0.285 mL

Please select the appropriate solvent to prepare the stock solution, according to the solubility of the product in different solvents. Please use it as soon as possible.

Note: The dilution table applies only to solid products. For liquid products, please calculate the stock solution based on the stated concentration and/or density.

Reference

Weichert JP, et al. Alkylphosphocholine analogs for broad-spectrum cancer imaging and therapy. *Sci Transl Med.* 2014 Jun 11;6(240):240ra75.

Swanson KI, et al. Fluorescent cancer-selective alkylphosphocholine analogs for intraoperative glioma detection. *Neurosurgery.* 2015 Feb;76(2):115-23; discussion 123-4.

Inhibitor · Natural Compounds · Compound Libraries · Recombinant Proteins

This product is for Research Use Only · Not for Human or Veterinary or Therapeutic Use

Tel:781-999-4286 E_mail:info@targetmol.com Address:34 Washington Street,Wellesley Hills,MA 02481