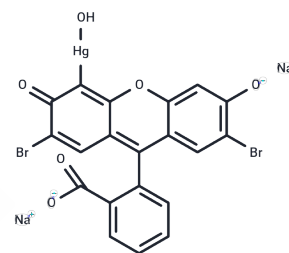


Merbromin

Chemical Properties

CAS No. :	129-16-8
Formula:	C ₂₀ H ₈ Br ₂ HgNa ₂ O ₆
Molecular Weight:	750.65
Storage:	Keep away from direct sunlight Powder: -20°C for 3 years In solvent: -80°C for 1 year <i>Actual storage temperature shall be subject to the COA.</i>



Biological Description

Description	Merbromin (Mercury dibromofluorescein disodium salt) is an organomercuric disodium salt compound and a fluorescein, used as a topical antiseptic for minor cuts and scrapes.
Targets(IC50)	Anti-infection, Proteasome, Antibacterial
In vitro	Instructions 1. Tissue sample preparation: After the tissue sample is fixed, cut it into 0.2 cm and 0.3 cm blocks. 2. Tissue staining: Dilute Merbromin at a concentration of 1:10, and use the diluted dye for tissue marking (1 drop of dye, wait 3 seconds).

Solubility Information

Solubility	DMSO: 25 mg/mL (33.3 mM), Sonication is recommended. (< 1 mg/ml refers to the product slightly soluble or insoluble)
In vivo Formulation	10% DMSO+40% PEG300+5% Tween-80+45% Saline: 0.5 mg/mL (0.67 mM), Sonication is recommended. <i>Please add the solvents sequentially, clarifying the solution as much as possible before adding the next one. Dissolve by heating and/or sonication if necessary. Working solution is recommended to be prepared and used immediately. The formulation provided above is for reference purposes only. In vivo formulations may vary and should be modified based on specific experimental conditions.</i>

Preparing Stock Solutions

	1mg	5mg	10mg
1 mM	1.3322 mL	6.6609 mL	13.3218 mL
5 mM	0.2664 mL	1.3322 mL	2.6644 mL
10 mM	0.1332 mL	0.6661 mL	1.3322 mL
50 mM	0.0266 mL	0.1332 mL	0.2664 mL

Please select the appropriate solvent to prepare the stock solution, according to the solubility of the product in different solvents. Please use it as soon as possible.

Note: The dilution table applies only to solid products. For liquid products, please calculate the stock solution based on the stated concentration and/or density.

Reference

Nonsiri P, et al. The effectiveness of using dye models for small tissue biopsies in the surgical pathology laboratory. *Folia Histochem Cytobiol.* 2023;61(2):123-129.

Inhibitor · Natural Compounds · Compound Libraries · Recombinant Proteins

This product is for Research Use Only · Not for Human or Veterinary or Therapeutic Use

Tel:781-999-4286 E_mail:info@targetmol.com Address:34 Washington Street,Wellesley Hills,MA 02481