

## C-Reactive Protein (CRP) (201-206)

## Chemical Properties

CAS No. : 130348-99-1

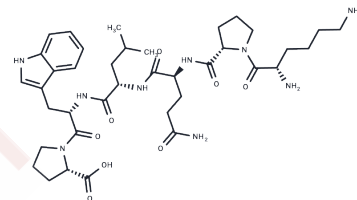
Formula: C38H57N9O8

Molecular Weight: 767.91

Keep away from moisture

Storage: Powder: -20°C for 3 years | In solvent: -80°C for 1 year

Actual storage temperature shall be subject to the COA.



## Biological Description

Description	C-Reactive Protein (CRP) Fragment (201-206) is a peptide segment derived from C-Reactive Protein (CRP), the quintessential indicator of inflammation. As a cardiovascular risk marker, CRP may facilitate atherogenesis.
Targets(IC50)	Others

## Solubility Information

Solubility	H2O: Soluble, (< 1 mg/ml refers to the product slightly soluble or insoluble)
------------	--

## Preparing Stock Solutions

	1mg	5mg	10mg
1 mM	1.3022 mL	6.5112 mL	13.0224 mL
5 mM	0.2604 mL	1.3022 mL	2.6045 mL
10 mM	0.1302 mL	0.6511 mL	1.3022 mL
50 mM	0.026 mL	0.1302 mL	0.2604 mL

Please select the appropriate solvent to prepare the stock solution, according to the solubility of the product in different solvents. Please use it as soon as possible.

Note: The dilution table applies only to solid products. For liquid products, please calculate the stock solution based on the stated concentration and/or density.

## Reference

Devaraj S, et al. C-reactive protein stimulates superoxide anion release and tissue factor activity in vivo. *Atherosclerosis*. 2009 Mar;203(1):67-74.

**Inhibitor · Natural Compounds · Compound Libraries · Recombinant Proteins**

This product is for Research Use Only · Not for Human or Veterinary or Therapeutic Use

Tel:781-999-4286 E\_mail:info@targetmol.com Address:34 Washington Street,Wellesley Hills,MA 02481