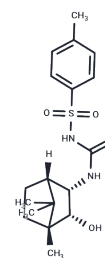


## Glibornuride

## Chemical Properties

CAS No. :	26944-48-9
Formula:	C <sub>18</sub> H <sub>26</sub> N <sub>2</sub> O <sub>4</sub> S
Molecular Weight:	366.48
Storage:	Keep away from moisture, Store at low temperature Powder: -20°C for 3 years   In solvent: -80°C for 1 year <small>Actual storage temperature shall be subject to the COA.</small>



## Biological Description

Description	Glibornuride, a blocker of ATP-sensitive K <sup>+</sup> channels (pK <sub>i</sub> : 5.75), inhibits high-affinity [3H]-glibenclamide binding with potencies corresponding to its K <sup>+</sup> channel activity.
Targets(IC <sub>50</sub> )	Potassium Channel
In vivo	Administration of Glibornuride (5 mg/kg; gavage, daily for 28 days) increases body weight and liver lipid peroxidation levels, while reducing serum uric acid levels in diabetic Swiss albino rats [2].

## Solubility Information

Solubility	DMSO: 250 mg/mL (682.17 mM), Sonication is recommended. ( $< 1$ mg/ml refers to the product slightly soluble or insoluble)
------------	---

## Preparing Stock Solutions

	1mg	5mg	10mg
1 mM	2.7287 mL	13.6433 mL	27.2866 mL
5 mM	0.5457 mL	2.7287 mL	5.4573 mL
10 mM	0.2729 mL	1.3643 mL	2.7287 mL
50 mM	0.0546 mL	0.2729 mL	0.5457 mL

Please select the appropriate solvent to prepare the stock solution, according to the solubility of the product in different solvents. Please use it as soon as possible.

Note: The dilution table applies only to solid products. For liquid products, please calculate the stock solution based on the stated concentration and/or density.

### Reference

Löffler C, et al. Pharmacological characterization of the sulphonylurea receptor in rat isolated aorta. *Br J Pharmacol.* 1997 Feb;120(3):476-80.

Ozsoy-Sacan O, et al. Effects of parsley (*Petroselinum crispum*) extract versus Glibornuride on the liver of streptozotocin-induced diabetic rats. *J Ethnopharmacol.* 2006 Mar 8;104(1-2):175-81.

**Inhibitor · Natural Compounds · Compound Libraries · Recombinant Proteins**

This product is for Research Use Only · Not for Human or Veterinary or Therapeutic Use

Tel:781-999-4286 E\_mail:info@targetmol.com Address:34 Washington Street,Wellesley Hills,MA 02481