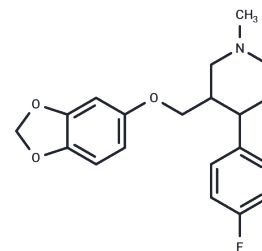


## N-methyl Paroxetine

## Chemical Properties

CAS No. :	110429-36-2
Formula:	C <sub>20</sub> H <sub>22</sub> FNO <sub>3</sub>
Molecular Weight:	343.39
Storage:	Powder: -20°C for 3 years   In solvent: -80°C for 1 year Actual storage temperature shall be subject to the COA.



## Biological Description

Description	N-methyl Paroxetine is a derivative of the selective serotonin reuptake inhibitor (SSRI) antidepressant paroxetine that inhibits [ <sup>3</sup> H]paroxetine binding to rat cortical membranes (K <sub>i</sub> = 4.3 nM). It inhibits serotonin uptake in rat brain synaptosomes with an IC <sub>50</sub> value of 22 nM. N-methyl Paroxetine has been used as a precursor in the synthesis of paroxetine and is a potential impurity in commercial preparations of paroxetine.
Targets(IC <sub>50</sub> )	Apoptosis,Others,Autophagy,p38 MAPK

## Solubility Information

Solubility	Ethanol: 20 mg/mL (58.24 mM),Sonication is recommended. DMF:PBS (pH 7) (1:10): 0.09 mg/mL (0.26 mM),Sonication is recommended. DMSO: 20 mg/mL (58.24 mM),Sonication is recommended. DMF: 33 mg/mL (96.1 mM),Sonication is recommended. (< 1 mg/ml refers to the product slightly soluble or insoluble)
------------	--

## Preparing Stock Solutions

	1mg	5mg	10mg
1 mM	2.9121 mL	14.5607 mL	29.1214 mL
5 mM	0.5824 mL	2.9121 mL	5.8243 mL
10 mM	0.2912 mL	1.4561 mL	2.9121 mL
50 mM	0.0582 mL	0.2912 mL	0.5824 mL

Please select the appropriate solvent to prepare the stock solution, according to the solubility of the product in different solvents. Please use it as soon as possible.

Note: The dilution table applies only to solid products. For liquid products, please calculate the stock solution based on the stated concentration and/or density.

**Inhibitor · Natural Compounds · Compound Libraries · Recombinant Proteins**

This product is for Research Use Only · Not for Human or Veterinary or Therapeutic Use

Tel:781-999-4286 E\_mail:info@targetmol.com Address:34 Washington Street,Wellesley Hills,MA 02481