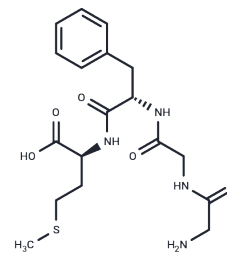


[Des-Tyr1]-Met-Enkephalin

Chemical Properties

CAS No. :	61370-88-5
Formula:	C ₁₈ H ₂₆ N ₄ O ₅ S
Molecular Weight:	410.49
Storage:	Keep away from moisture Powder: -20°C for 3 years In solvent: -80°C for 1 year <i>Actual storage temperature shall be subject to the COA.</i>



Biological Description

Description	Enkephalin-met, des-tyr(1)- causes retrograde amnesia in rats.
Targets(IC50)	Nepriylisin

Preparing Stock Solutions

	1mg	5mg	10mg
1 mM	2.4361 mL	12.1806 mL	24.3611 mL
5 mM	0.4872 mL	2.4361 mL	4.8722 mL
10 mM	0.2436 mL	1.2181 mL	2.4361 mL
50 mM	0.0487 mL	0.2436 mL	0.4872 mL

Please select the appropriate solvent to prepare the stock solution, according to the solubility of the product in different solvents. Please use it as soon as possible.

Note: The dilution table applies only to solid products. For liquid products, please calculate the stock solution based on the stated concentration and/or density.

Reference

- Kowalski J. Immunologic action of [Met⁵]enkephalin fragments. *Eur J Pharmacol.* 1998 Apr 17;347(1):95-9. PubMed PMID: 9650853.
- Carrasco MA, Dias RD, Perry ML, Wofchuk ST, Souza DO, Izquierdo I. Effect of morphine, ACTH, epinephrine, Met-, Leu- and des-Tyr-Met-enkephalin on beta-endorphin-like immunoreactivity of rat brain. *Psychoneuroendocrinology.* 1982;7(2-3):229-34. PubMed PMID: 6294717.
- Izquierdo I, Dias RD. Retrograde amnesia caused by Met-, Leu- and des-Tyr-Met-enkephalin in the rat and its reversal by naloxone. *Neurosci Lett.* 1981 Mar 10;22(2):189-93. PubMed PMID: 7194992.
- Neidle A, Kelly JA. The isolation of a peptidyl dipeptidase from mouse brain cytosol that cleaves adrenocorticotrophic hormone-(7-10) and des-tyrosine-enkephalins. *Arch Biochem Biophys.* 1984 Aug 15;233(1):115-26. PubMed PMID: 6087738.

Inhibitor · Natural Compounds · Compound Libraries · Recombinant Proteins

This product is for Research Use Only · Not for Human or Veterinary or Therapeutic Use

Tel:781-999-4286 E_mail:info@targetmol.com Address:34 Washington Street,Wellesley Hills,MA 02481