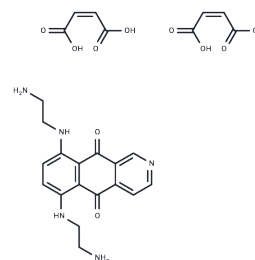


## Pixantrone dimaleate

## Chemical Properties

CAS No. :	144675-97-8
Formula:	C <sub>25</sub> H <sub>27</sub> N <sub>5</sub> O <sub>10</sub>
Molecular Weight:	557.21
Storage:	Powder: -20°C for 3 years   In solvent: -80°C for 1 year Actual storage temperature shall be subject to the COA.



## Biological Description

Description	Pixantrone dimaleate (Pixantrone Maleate) (BBR 2778 dimaleate) is an experimental antineoplastic drug.
Targets(IC50)	Topoisomerase
Kinase Assay	Recombinant RT enzymes are expressed, purified, and assessed for inhibition by Efavirenz (L-743726). Ki and Kii values are determined for each enzyme tested. The wild-type RT exhibited exclusively noncompetitive inhibition kinetics (data not shown), and, therefore, the Ki and Kii values are identical. Pure noncompetitive inhibition is not assumed for the mutant enzymes, and, hence, the values of both Ki and Kii are obtained from the linear mixed-type inhibition equation. The two- to threefold differences between the Ki and Kii values probably reflect a small contribution of competitive inhibition with the mutant RTs[1].

## Solubility Information

Solubility	DMSO: 91 mg/mL (163.31 mM),Sonication is recommended. (< 1 mg/ml refers to the product slightly soluble or insoluble)
In vivo Formulation	10% DMSO+40% PEG300+5% Tween-80+45% Saline: 1 mg/mL (1.79 mM),Sonication is recommended. <i>Please add the solvents sequentially, clarifying the solution as much as possible before adding the next one. Dissolve by heating and/or sonication if necessary. Working solution is recommended to be prepared and used immediately. The formulation provided above is for reference purposes only. In vivo formulations may vary and should be modified based on specific experimental conditions.</i>

### Preparing Stock Solutions

---

	<b>1mg</b>	<b>5mg</b>	<b>10mg</b>
1 mM	1.7947 mL	8.9733 mL	17.9466 mL
5 mM	0.3589 mL	1.7947 mL	3.5893 mL
10 mM	0.1795 mL	0.8973 mL	1.7947 mL
50 mM	0.0359 mL	0.1795 mL	0.3589 mL

---

Please select the appropriate solvent to prepare the stock solution, according to the solubility of the product in different solvents. Please use it as soon as possible.

Note: The dilution table applies only to solid products. For liquid products, please calculate the stock solution based on the stated concentration and/or density.

#### Reference

Cavalletti E., et al. Invest New Drugs, 2007. 25(3): p. 187-95.

**Inhibitor · Natural Compounds · Compound Libraries · Recombinant Proteins**

This product is for Research Use Only · Not for Human or Veterinary or Therapeutic Use

Tel:781-999-4286 E\_mail:info@targetmol.com Address:34 Washington Street,Wellesley Hills,MA 02481