

LY2922470

## Chemical Properties

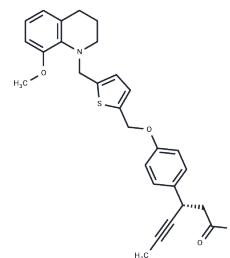
CAS No. : 1423018-12-5

Formula: C<sub>28</sub>H<sub>29</sub>N<sub>3</sub>O<sub>4</sub>S

Molecular Weight: 475.6

Storage: Pure form: -20°C for 3 years | In solvent: -80°C for 1 year

Actual storage temperature shall be subject to the COA.



## Biological Description

Description	LY2922470 is a potent, selective G protein-coupled receptor 40 (GPR40) agonist, with EC <sub>50</sub> s of 7 nM for human GPR40, 1 nM for mouse GPR40 and 3 nM for rat GPR40, respectively. LY2922470 reduces glucose levels along and increases insulin and GLP-1 significantly.
Targets(IC <sub>50</sub> )	GPCR

## Solubility Information

Solubility	DMSO: 125 mg/mL (262.83 mM), Sonication is recommended. (< 1 mg/ml refers to the product slightly soluble or insoluble)
In vivo Formulation	10% DMSO+40% PEG300+5% Tween 80+45% Saline: 4 mg/mL (8.41 mM), Sonication is recommended. <i>Please add the solvents sequentially, clarifying the solution as much as possible before adding the next one. Dissolve by heating and/or sonication if necessary. Working solution is recommended to be prepared and used immediately. The formulation provided above is for reference purposes only. In vivo formulations may vary and should be modified based on specific experimental conditions.</i>

### Preparing Stock Solutions

---

	1mg	5mg	10mg
1 mM	2.1026 mL	10.513 mL	21.0261 mL
5 mM	0.4205 mL	2.1026 mL	4.2052 mL
10 mM	0.2103 mL	1.0513 mL	2.1026 mL
50 mM	0.0421 mL	0.2103 mL	0.4205 mL

---

Please select the appropriate solvent to prepare the stock solution, according to the solubility of the product in different solvents. Please use it as soon as possible.

Note: The dilution table applies only to solid products. For liquid products, please calculate the stock solution based on the stated concentration and/or density.

### Reference

Hamdouchi C, et al. The Discovery, Preclinical, and Early Clinical Development of Potent and Selective GPR40 Agonists for the Treatment of Type 2 Diabetes Mellitus (LY2881835, LY2922083, and LY2922470). J Med Chem. 2016 Dec 22;59(24):10891-10916.

**Inhibitor · Natural Compounds · Compound Libraries · Recombinant Proteins**

This product is for Research Use Only · Not for Human or Veterinary or Therapeutic Use

Tel:781-999-4286 E\_mail:info@targetmol.com Address:34 Washington Street,Wellesley Hills,MA 02481