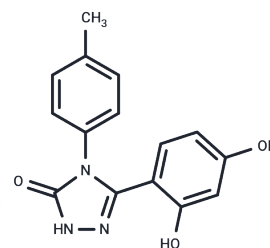


KPLH1130

Chemical Properties

CAS No. : 906669-07-6
 Formula: C₁₅H₁₃N₃O₃
 Molecular Weight: 283.28
 Storage: Powder: -20°C for 3 years | In solvent: -80°C for 1 year
 Actual storage temperature shall be subject to the COA.



Biological Description

Description	KPLH1130, a specific pyruvate dehydrogenase kinase (PDK) inhibitor, enhances glucose tolerance in mice fed a high-fat diet (HFD). It effectively hinders macrophage polarization and mitigates proinflammatory reactions.
Targets(IC50)	PDK,Dehydrogenase

Solubility Information

Solubility	DMSO: 83.33 mg/mL (294.16 mM),Sonication is recommended. (< 1 mg/ml refers to the product slightly soluble or insoluble)
In vivo Formulation	10% DMSO+40% PEG300+5% Tween 80+45% Saline: 4 mg/mL (14.12 mM),Sonication is recommended. <i>Please add the solvents sequentially, clarifying the solution as much as possible before adding the next one. Dissolve by heating and/or sonication if necessary. Working solution is recommended to be prepared and used immediately. The formulation provided above is for reference purposes only. In vivo formulations may vary and should be modified based on specific experimental conditions.</i>

Preparing Stock Solutions

	1mg	5mg	10mg
1 mM	3.5301 mL	17.6504 mL	35.3008 mL
5 mM	0.706 mL	3.5301 mL	7.0602 mL
10 mM	0.353 mL	1.765 mL	3.5301 mL
50 mM	0.0706 mL	0.353 mL	0.706 mL

Please select the appropriate solvent to prepare the stock solution, according to the solubility of the product in different solvents. Please use it as soon as possible.

Note: The dilution table applies only to solid products. For liquid products, please calculate the stock solution based on the stated concentration and/or density.

Reference

Min BK, et al. Pyruvate Dehydrogenase Kinase Is a Metabolic Checkpoint for Polarization of Macrophages to the M1 Phenotype. Front Immunol. 2019 May 7;10:944.

Inhibitor · Natural Compounds · Compound Libraries · Recombinant Proteins

This product is for Research Use Only · Not for Human or Veterinary or Therapeutic Use

Tel:781-999-4286 E_mail:info@targetmol.com Address:34 Washington Street,Wellesley Hills,MA 02481