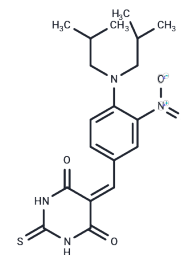


M2I-1

Chemical Properties

CAS No. : 312271-03-7
 Formula: C₁₉H₂₄N₄O₄S
 Molecular Weight: 404.48
 Storage: Powder: -20°C for 3 years | In solvent: -80°C for 1 year
Actual storage temperature shall be subject to the COA.



Biological Description

Description	M2I-1 a small Mad2 inhibitor-1. the first small molecule inhibitor targeting the binding of Mad2 to Cdc20, an essential proteinprotein interaction (PPI) within the SAC. It can disturbs conformational dynamics of Mad2 critical for complex formation with Cdc20. It can also inhibited the Mad2-F-Mbp1 interaction in FP assays.
Targets(IC50)	Others,Chk

Solubility Information

Solubility	DMSO: 45 mg/mL (111.25 mM),Sonication is recommended. (< 1 mg/ml refers to the product slightly soluble or insoluble)
In vivo Formulation	10% DMSO+40% PEG300+5% Tween 80+45% Saline: 2 mg/mL (4.94 mM),Sonication is recommended. <i>Please add the solvents sequentially, clarifying the solution as much as possible before adding the next one. Dissolve by heating and/or sonication if necessary. Working solution is recommended to be prepared and used immediately. The formulation provided above is for reference purposes only. In vivo formulations may vary and should be modified based on specific experimental conditions.</i>

Preparing Stock Solutions

	1mg	5mg	10mg
1 mM	2.4723 mL	12.3616 mL	24.7231 mL
5 mM	0.4945 mL	2.4723 mL	4.9446 mL
10 mM	0.2472 mL	1.2362 mL	2.4723 mL
50 mM	0.0494 mL	0.2472 mL	0.4945 mL

Please select the appropriate solvent to prepare the stock solution, according to the solubility of the product in different solvents. Please use it as soon as possible.

Note: The dilution table applies only to solid products. For liquid products, please calculate the stock solution based on the stated concentration and/or density.

Reference

Johanna Kastl et al. Mad2 Inhibitor-1 (M2I-1): A Small Molecule Protein-Protein Interaction Inhibitor Targeting the Mitotic Spindle Assembly Checkpoint. ACS Chem. Biol., 2015, 10 (7), pp 1661-1666.

Inhibitor · Natural Compounds · Compound Libraries · Recombinant Proteins

This product is for Research Use Only · Not for Human or Veterinary or Therapeutic Use

Tel:781-999-4286 E_mail:info@targetmol.com Address:34 Washington Street,Wellesley Hills,MA 02481