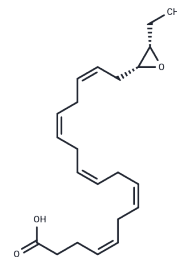


19R(20S)-EpDPA

Chemical Properties

CAS No. :	2242542-60-3
Formula:	C22H32O3
Molecular Weight:	344.495
Storage:	Powder: -20°C for 3 years In solvent: -80°C for 1 year Actual storage temperature shall be subject to the COA.



Biological Description

Description	19R(20S)-EpDPA is an oxylipin and a metabolite of docosahexaenoic acid .1,2It is formed from DHA by various cytochrome P450 (CYP) isoforms in a stereoselective manner.219R(20S)-EpDPA (30 nM) prevents calcium-induced increases in the spontaneous beating of isolated neonatal rat cardiomyocytes (NRCMs).3
Targets(IC50)	Others,Drug Metabolite

Solubility Information

Solubility	Ethanol: Soluble (< 1 mg/ml refers to the product slightly soluble or insoluble)
------------	---

Preparing Stock Solutions

	1mg	5mg	10mg
1 mM	2.9028 mL	14.5138 mL	29.0276 mL
5 mM	0.5806 mL	2.9028 mL	5.8055 mL
10 mM	0.2903 mL	1.4514 mL	2.9028 mL
50 mM	0.0581 mL	0.2903 mL	0.5806 mL

Please select the appropriate solvent to prepare the stock solution, according to the solubility of the product in different solvents. Please use it as soon as possible.

Note: The dilution table applies only to solid products. For liquid products, please calculate the stock solution based on the stated concentration and/or density.

Reference

Cinelli, M.A., Yang, J., Scharmen, A., et al. Enzymatic synthesis and chemical inversion provide both enantiomers of bioactive epoxydocosapentaenoic acids. *Lipid Res.* 59(11)2237-2252(2018)

Lucas, D., Goulitquer, S., Marienhagen, J., et al. Stereoselective epoxidation of the last double bond of polyunsaturated fatty acids by human cytochromes P450. *Lipid Res.* 51(5)1125-1133(2010)

Burke, J.E., and Dennis, E.A. Phospholipase A2 structure/function, mechanism, and signaling. *Lipid Res.* 50(Suppl) S237-S242(2009)

Inhibitor · Natural Compounds · Compound Libraries · Recombinant Proteins

This product is for Research Use Only · Not for Human or Veterinary or Therapeutic Use

Tel: 781-999-4286 E_mail: info@targetmol.com Address: 34 Washington Street, Wellesley Hills, MA 02481