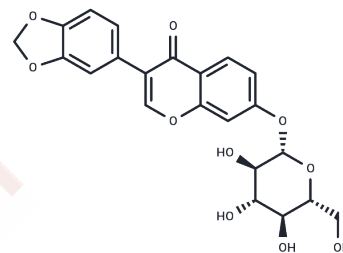


Rothindin

Chemical Properties

CAS No. :	63347-43-3
Formula:	C ₂₂ H ₂₀ O ₁₀
Molecular Weight:	444.39
Storage:	Powder: -20°C for 3 years In solvent: -80°C for 1 year Actual storage temperature shall be subject to the COA.



Biological Description

Description	Rothindin is an isoflavone glucoside from <i>Rothia indica</i> Linn.
Targets(IC50)	Others

Preparing Stock Solutions

	1mg	5mg	10mg
1 mM	2.2503 mL	11.2514 mL	22.5028 mL
5 mM	0.4501 mL	2.2503 mL	4.5006 mL
10 mM	0.225 mL	1.1251 mL	2.2503 mL
50 mM	0.045 mL	0.225 mL	0.4501 mL

Please select the appropriate solvent to prepare the stock solution, according to the solubility of the product in different solvents. Please use it as soon as possible.

Note: The dilution table applies only to solid products. For liquid products, please calculate the stock solution based on the stated concentration and/or density.

Reference

Lévai A, Bognár R. Synthesis of rothindin--a new isoflavone glucoside from *Rothia indica* Linn. *Pharmazie*. 1978 Apr;33(4):235-6. PubMed PMID: 674324.

Arai MA, Koryudzu K, Koyano T, Kowithayakorn T, Ishibashi M. Naturally occurring Ngn2 promoter activators from *Butea superba*. *Mol Biosyst*. 2013 Oct;9(10):2489-97. doi: 10.1039/c3mb70083f. PubMed PMID: 23903453.

Inhibitor · Natural Compounds · Compound Libraries · Recombinant Proteins

This product is for Research Use Only. Not for Human or Veterinary or Therapeutic Use

Tel:781-999-4286 E_mail:info@targetmol.com Address:34 Washington Street,Wellesley Hills,MA 02481