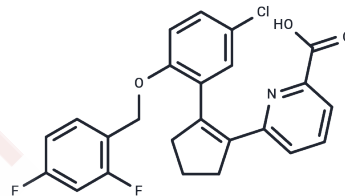


GW848687X

Chemical Properties

CAS No. : 612831-24-0
 Formula: C₂₄H₁₈ClF₂NO₃
 Molecular Weight: 441.85
 Storage: Powder: -20°C for 3 years | In solvent: -80°C for 1 year
 Actual storage temperature shall be subject to the COA.



Biological Description

Description	GW848687X, a potent and selective prostaglandin EP1 receptor antagonist, is used for the treatment of inflammatory pain.
Targets(IC50)	Others, Prostaglandin Receptor

Preparing Stock Solutions

	1mg	5mg	10mg
1 mM	2.2632 mL	11.3161 mL	22.6321 mL
5 mM	0.4526 mL	2.2632 mL	4.5264 mL
10 mM	0.2263 mL	1.1316 mL	2.2632 mL
50 mM	0.0453 mL	0.2263 mL	0.4526 mL

Please select the appropriate solvent to prepare the stock solution, according to the solubility of the product in different solvents. Please use it as soon as possible.

Note: The dilution table applies only to solid products. For liquid products, please calculate the stock solution based on the stated concentration and/or density.

Reference

Giblin GM, Bit RA, Brown SH, Chaignot HM, Chowdhury A, Chessell IP, Clayton NM, Coleman T, Hall A, Hammond B, Hurst DN, Michel AD, Naylor A, Novelli R, Scoccitti T, Spalding D, Tang SP, Wilson AW, Wilson R. The discovery of 6-[2-(5-chloro-2-((2,4-difluorophenyl)methyl)oxy)phenyl]-1-cyclopenten-1-yl]-2-pyridinecarboxylic acid, GW848687X, a potent and selective prostaglandin EP1 receptor antagonist for the treatment of inflammatory pain. *Bioorg Med Chem Lett.* 2007 Jan 15;17(2):385-9. PubMed PMID: 17084082.

Inhibitor · Natural Compounds · Compound Libraries · Recombinant Proteins

This product is for Research Use Only · Not for Human or Veterinary or Therapeutic Use

Tel: 781-999-4286 E_mail: info@targetmol.com Address: 34 Washington Street, Wellesley Hills, MA 02481