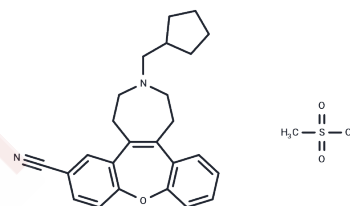


Savoxepin mesylate

Chemical Properties

CAS No. : 79262-47-8
 Formula: C₂₆H₃₀N₂O₄S
 Molecular Weight: 466.59
 Storage: Powder: -20°C for 3 years | In solvent: -80°C for 1 year
 Actual storage temperature shall be subject to the COA.



Biological Description

Description	Savoxepin mesylate, a tetracyclic cyano-dibenzoxepino-azepine derivative, has potent antidopaminergic activity.
Targets(IC50)	Others,Dopamine Receptor

Preparing Stock Solutions

	1mg	5mg	10mg
1 mM	2.1432 mL	10.716 mL	21.4321 mL
5 mM	0.4286 mL	2.1432 mL	4.2864 mL
10 mM	0.2143 mL	1.0716 mL	2.1432 mL
50 mM	0.0429 mL	0.2143 mL	0.4286 mL

Please select the appropriate solvent to prepare the stock solution, according to the solubility of the product in different solvents. Please use it as soon as possible.

Note: The dilution table applies only to solid products. For liquid products, please calculate the stock solution based on the stated concentration and/or density.

Reference

Volz HP, Möller HJ, Gerebtzoff A, Bischoff S. Savoxepine versus haloperidol. Reasons for a failed controlled clinical trial in patients with an acute episode of schizophrenia. Eur Arch Psychiatry Clin Neurosci. 2002 Apr;252(2):76-80. PubMed PMID: 12111340.

Lefèvre G, Duval M, Botta L, Godbillon J. Direct microtitre plate radioimmunoassay of savoxepine in unextracted plasma. J Immunoassay. 1996 Feb;17(1):29-46. PubMed PMID: 8926305.

Hoffman DC, Donovan H. Catalepsy as a rodent model for detecting antipsychotic drugs with extrapyramidal side effect liability. Psychopharmacology (Berl). 1995 Jul;120(2):128-33. PubMed PMID: 7480543.

Cascella NG, Tarazi FI, Shirakawa O, Tamminga CA. Savoxepine fails to selectively influence glucose metabolism in the rat limbic system. Psychopharmacology (Berl). 1994 Mar;114(2):275-80. PubMed PMID: 7838920.

Inhibitor · Natural Compounds · Compound Libraries · Recombinant Proteins

This product is for Research Use Only · Not for Human or Veterinary or Therapeutic Use

Tel:781-999-4286 E_mail:info@targetmol.com Address:34 Washington Street,Wellesley Hills,MA 02481