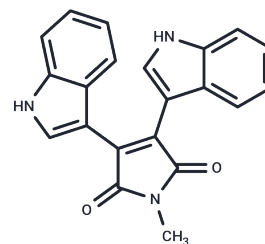


Bisindolylmaleimide V

Chemical Properties

CAS No. :	113963-68-1
Formula:	C ₂₁ H ₁₅ N ₃ O ₂
Molecular Weight:	341.36
Storage:	Powder: -20°C for 3 years In solvent: -80°C for 1 year Actual storage temperature shall be subject to the COA.



Biological Description

Description	Bisindolylmaleimide V, a bisindolylmaleimide derivative, is an inactive of a kinase inhibitor.
Targets(IC50)	PKC,S6 Kinase
In vitro	Bisindolylmaleimide V(BIM V) blocks the activation of mitogen-stimulated protein kinase p70s6k/p85s6k (S6K) in vivo with an IC50 value of 8 μM

Solubility Information

Solubility	DMSO: soluble (< 1 mg/ml refers to the product slightly soluble or insoluble)
------------	--

Preparing Stock Solutions

	1mg	5mg	10mg
1 mM	2.9295 mL	14.6473 mL	29.2946 mL
5 mM	0.5859 mL	2.9295 mL	5.8589 mL
10 mM	0.2929 mL	1.4647 mL	2.9295 mL
50 mM	0.0586 mL	0.2929 mL	0.5859 mL

Please select the appropriate solvent to prepare the stock solution, according to the solubility of the product in different solvents. Please use it as soon as possible.

Note: The dilution table applies only to solid products. For liquid products, please calculate the stock solution based on the stated concentration and/or density.

Reference

Marmy-Conus N , Hannan K M , Pearson R B . Ro 31-6045, the inactive analogue of the protein kinase C inhibitor Ro 31-8220, blocks in vivo activation of p70s6k/p85s6k: implications for the analysis of S6K signalling[J]. Febs Letters, 2002, 519(1-3):0-140.

Lazareno S , Popham A , Birdsall N J M . Muscarinic interactions of bisindolylmaleimide analogues[J]. European Journal of Pharmacology, 1998, 360(2-3):281-284.

Inhibitor · Natural Compounds · Compound Libraries · Recombinant Proteins

This product is for Research Use Only· Not for Human or Veterinary or Therapeutic Use

Tel:781-999-4286 E_mail:info@targetmol.com Address:34 Washington Street,Wellesley Hills,MA 02481