

KF38789

Chemical Properties

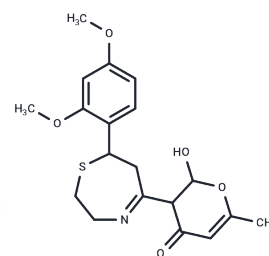
CAS No. : 257292-29-8

Formula: C₁₉H₂₁NO₅

Molecular Weight: 375.44

Storage: Powder: -20°C for 3 years | In solvent: -80°C for 1 year

Actual storage temperature shall be subject to the COA.



Biological Description

Description	KF38789 is a selective inhibitor of P-selectin-mediated cell adhesion and P-selectin immunoglobulin G chimeric protein (IgG).
Targets(IC50)	Others
In vitro	KF 38789, inhibited the binding of U937 cells to immobilized P-selectin immunoglobulin G chimeric protein (P-selectin-Ig) with an IC50 value of 1.97 microM. Cell adhesion to both E-selectin-Ig and L-selectin-Ig were not affected even by 100 microM of KF 38789. Moreover, KF 38789 inhibited P-selectin-induced superoxide production from human polymorphonuclear cells. Intravenously injected KF 38789 significantly inhibited the TG-induced accumulation of leukocytes in the mouse peritoneal cavity (p<0.01)[1].
In vivo	KF 38789 significantly reduced mechanical allodynia in the facial carrageenan-injected mice[2].

Solubility Information

Solubility	DMSO: 11.25 mg/mL (29.96 mM),Sonication is recommended. (< 1 mg/ml refers to the product slightly soluble or insoluble)
------------	--

Preparing Stock Solutions

	1mg	5mg	10mg
1 mM	2.6635 mL	13.3177 mL	26.6354 mL
5 mM	0.5327 mL	2.6635 mL	5.3271 mL
10 mM	0.2664 mL	1.3318 mL	2.6635 mL
50 mM	0.0533 mL	0.2664 mL	0.5327 mL

Please select the appropriate solvent to prepare the stock solution, according to the solubility of the product in different solvents. Please use it as soon as possible.

Note: The dilution table applies only to solid products. For liquid products, please calculate the stock solution based on the stated concentration and/or density.

Reference

S Ohta, et al. Inhibition of P-selectin specific cell adhesion by a low molecular weight, non-carbohydrate compound, KF38789. *Inflamm Res.* 2001 Nov;50(11):544-51.

Kay-Wee Poh, et al. Global gene expression analysis in the mouse brainstem after hyperalgesia induced by facial carrageenan injection--evidence for a form of neurovascular coupling? *Pain.* 2009 Mar;142(1-2):133-41.

Peter J Gillies, et al. Demonstration of P-selectin expression and potential function in human corneal epithelial cells. *Exp Eye Res.* 2018 Nov;176:196-206.

Inhibitor · Natural Compounds · Compound Libraries · Recombinant Proteins

This product is for Research Use Only · Not for Human or Veterinary or Therapeutic Use

Tel:781-999-4286 E_mail:info@targetmol.com Address:34 Washington Street,Wellesley Hills,MA 02481