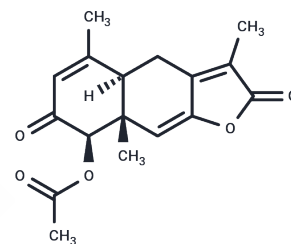


## Salplebeone A

## Chemical Properties

CAS No. :	2124222-44-0
Formula:	C <sub>17</sub> H <sub>18</sub> O <sub>5</sub>
Molecular Weight:	302.326
Storage:	Powder: -20°C for 3 years   In solvent: -80°C for 1 year Actual storage temperature shall be subject to the COA.



## Biological Description

Description	Salplebeone A is a useful organic compound for research related to life sciences. The catalog number is T125352 and the CAS number is 2124222-44-0.
Targets(IC50)	Others

## Preparing Stock Solutions

	1mg	5mg	10mg
1 mM	3.3076 mL	16.5382 mL	33.0764 mL
5 mM	0.6615 mL	3.3076 mL	6.6153 mL
10 mM	0.3308 mL	1.6538 mL	3.3076 mL
50 mM	0.0662 mL	0.3308 mL	0.6615 mL

Please select the appropriate solvent to prepare the stock solution, according to the solubility of the product in different solvents. Please use it as soon as possible.

Note: The dilution table applies only to solid products. For liquid products, please calculate the stock solution based on the stated concentration and/or density.

**Inhibitor · Natural Compounds · Compound Libraries · Recombinant Proteins**

This product is for Research Use Only · Not for Human or Veterinary or Therapeutic Use

Tel: 781-999-4286 E\_mail: info@targetmol.com Address: 34 Washington Street, Wellesley Hills, MA 02481