

GM-608

Chemical Properties

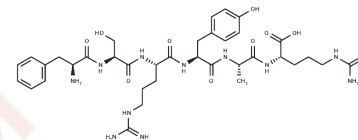
CAS No. : 725715-18-4

Formula: C₃₆H₅₄N₁₂O₉

Molecular Weight: 798.89

Storage: Keep away from moisture
Powder: -20°C for 3 years | In solvent: -80°C for 1 year

Actual storage temperature shall be subject to the COA.



Biological Description

Description	GM-604(alirinetide) is a potential treatment for amyotrophic lateral sclerosis and ischemic stroke.
-------------	---

Preparing Stock Solutions

	1mg	5mg	10mg
1 mM	1.2517 mL	6.2587 mL	12.5174 mL
5 mM	0.2503 mL	1.2517 mL	2.5035 mL
10 mM	0.1252 mL	0.6259 mL	1.2517 mL
50 mM	0.025 mL	0.1252 mL	0.2503 mL

Please select the appropriate solvent to prepare the stock solution, according to the solubility of the product in different solvents. Please use it as soon as possible.

Note: The dilution table applies only to solid products. For liquid products, please calculate the stock solution based on the stated concentration and/or density.

Reference

Tomlin JL, Guinn BA, Penn LZ, Berinstein NL. Bcl-2 and c-Myc co-operate in the Epstein-Barr virus-immortalized human B-cell line GM607 but do not confer tumorigenicity. *Leuk Lymphoma*. 2005 Apr;46(4):581-92. PubMed PMID: 16019487.

Giometti CS, Willard KE, Anderson NL. Cytoskeletal proteins from human skin fibroblasts, peripheral blood leukocytes, and a lymphoblastoid cell line compared by two-dimensional gel electrophoresis. *Clin Chem*. 1982 Apr;28(4 Pt 2):955-61. PubMed PMID: 7200412.

Lautner-Rieske A, Huber C, Meindl A, Pargent W, Schäble KF, Thiebe R, Zocher I, Zachau HG. The human immunoglobulin kappa locus. Characterization of the duplicated A regions. *Eur J Immunol*. 1992 Apr;22(4):1023-9. PubMed PMID: 1551402.

Giometti CS, Anderson NL. Tropomyosin heterogeneity in human cells. *J Biol Chem*. 1984 Nov 25;259(22):14113-20. PubMed PMID: 6501290.

Inhibitor · Natural Compounds · Compound Libraries · Recombinant Proteins

This product is for Research Use Only · Not for Human or Veterinary or Therapeutic Use

Tel:781-999-4286 E_mail:info@targetmol.com Address:34 Washington Street,Wellesley Hills,MA 02481