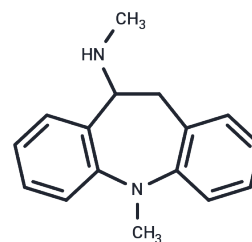


Metopramine

Chemical Properties

CAS No. :	21730-16-5
Formula:	C ₁₆ H ₁₈ N ₂
Molecular Weight:	238.33
Storage:	Pure form: -20°C for 3 years In solvent: -80°C for 1 year Actual storage temperature shall be subject to the COA.



Biological Description

Description	Metopramine (19560 RP) is a novel psychostimulant, an N-methyl-D-aspartate receptor (NMDA) antagonist with antidepressant and anti-injury perception activity that promotes increased levels of acetylcholine in the striatum.
Targets(IC50)	Dehydrogenase,iGluR
In vivo	In male Swiss albino mice, Metopramine (0-20 mg/kg; intraperitoneal injection) increases jump latency and threshold voltage in a dose-dependent manner while reducing writhes and tail flick latency[4].

Preparing Stock Solutions

	1mg	5mg	10mg
1 mM	4.1959 mL	20.9793 mL	41.9586 mL
5 mM	0.8392 mL	4.1959 mL	8.3917 mL
10 mM	0.4196 mL	2.0979 mL	4.1959 mL
50 mM	0.0839 mL	0.4196 mL	0.8392 mL

Please select the appropriate solvent to prepare the stock solution, according to the solubility of the product in different solvents. Please use it as soon as possible.

Note: The dilution table applies only to solid products. For liquid products, please calculate the stock solution based on the stated concentration and/or density.

Reference

- M Bonierbale, et al. [Metapramine: antidepressant and psycho-stimulant]. *Encephale*. 1976;2(3):219-23.
- H Dagonneau, et al. [Effects, in rats, of metapramine and carpiramine on the uptake of catecholamines and serotonin; relationship with 3H-imipramine binding]. *C R Seances Soc Biol Fil*. 1986;180(1):43-8.
- J M Warter, et al. Immediate effects of 14 non MAOI antidepressants in rats with spontaneous petit mal-like seizures. *Prog Neuropsychopharmacol Biol Psychiatry*. 1990;14(2):261-70.
- A Boireau, et al. The antidepressant metapramine is a low-affinity antagonist at N-methyl-D-aspartic acid receptors. *Neuropharmacology*. 1996;35(12):1703-7.

Inhibitor · Natural Compounds · Compound Libraries · Recombinant Proteins

This product is for Research Use Only · Not for Human or Veterinary or Therapeutic Use

Tel:781-999-4286 E_mail:info@targetmol.com Address:34 Washington Street,Wellesley Hills,MA 02481