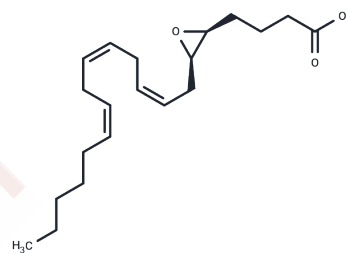


$(\pm)$ 5(6)-EET

## Chemical Properties

CAS No. : 87173-80-6  
 Formula: C<sub>20</sub>H<sub>32</sub>O<sub>3</sub>  
 Molecular Weight: 320.473  
 Storage: Powder: -20°C for 3 years | In solvent: -80°C for 1 year  
 Actual storage temperature shall be subject to the COA.



## Biological Description

Description	5(6)-EET is a fully racemic version of the enantiomeric forms biosynthesized from arachidonic acid by cytochrome P450 enzymes. In solution, 5(6)-EET degrades into 5,6-DiHET and 5(6)- $\delta$ -lactone, which can be converted to 5(6)-DiHET and quantified by GC-MS. In neuroendocrine cells, such as the anterior pituitary and pancreatic islets, 5(6)-EET has been implicated in the mobilization of calcium and hormone secretion. 5(6)-EET is an inhibitor of T-type voltage-gated calcium channels (Cav3) that inhibits isoforms Cav3.1, Cav3.2 (IC <sub>50</sub> = 0.54 $\mu$ M), and Cav3.3 and decreases nifedipine-resistant phenylephrine-induced vasoconstriction in isolated mouse mesenteric arteries via Cav3.2 blockade when used at a concentration of 3 $\mu$ M. In addition, it is a substrate of COX-1 and COX-2, as measured by oxygen consumption and product formation assays when used at a concentration of 50 $\mu$ M. $(\pm)$ 5(6)-EET is provided as a mixture of the free acid and lactone.
Targets(IC <sub>50</sub> )	Others, Calcium Channel, Adrenergic Receptor

## Solubility Information

Solubility	DMSO: >50 mg/mL (per Rao Maddipati), Sonication is recommended. Ethanol: >50 mg/mL (per Rao Maddipati), Sonication is recommended. DMF: >50 mg/mL (per Rao Maddipati), Sonication is recommended. PBS (pH 7.2): >1 mg/mL (from 13(S)-HODE), Sonication is recommended. (< 1 mg/ml refers to the product slightly soluble or insoluble)
------------	--

### Preparing Stock Solutions

---

	<b>1mg</b>	<b>5mg</b>	<b>10mg</b>
1 mM	3.1204 mL	15.6021 mL	31.2042 mL
5 mM	0.6241 mL	3.1204 mL	6.2408 mL
10 mM	0.312 mL	1.5602 mL	3.1204 mL
50 mM	0.0624 mL	0.312 mL	0.6241 mL

---

Please select the appropriate solvent to prepare the stock solution, according to the solubility of the product in different solvents. Please use it as soon as possible.

Note: The dilution table applies only to solid products. For liquid products, please calculate the stock solution based on the stated concentration and/or density.

**Inhibitor · Natural Compounds · Compound Libraries · Recombinant Proteins**

This product is for Research Use Only · Not for Human or Veterinary or Therapeutic Use

Tel:781-999-4286 E\_mail:info@targetmol.com Address:34 Washington Street,Wellesley Hills,MA 02481